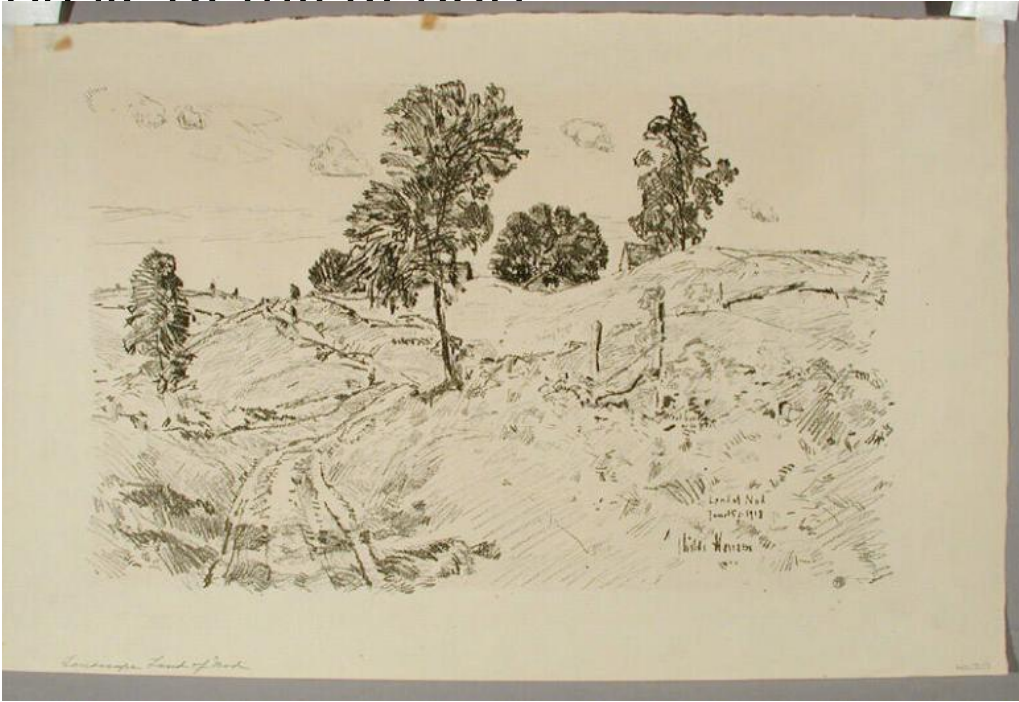


Basic Detail Report



Title Landscape, Land of Nod

Date 1918

Primary Maker Childe Hassam

Medium Lithography; printer's ink on wove paper

Description A dirt road leads between small hills, presumably fields or pastures.

Fence posts are visible at the right. A few trees dot the landscape. The roofs of three buildings are just visible above the hills in the background.

Dimensions Primary Dimensions (image height x width): 9 x 14 1/8in. (22.9 x 35.9 cm) Sheet (height x width): 11 1/2 x 18in. (29.2 x 45.7cm)