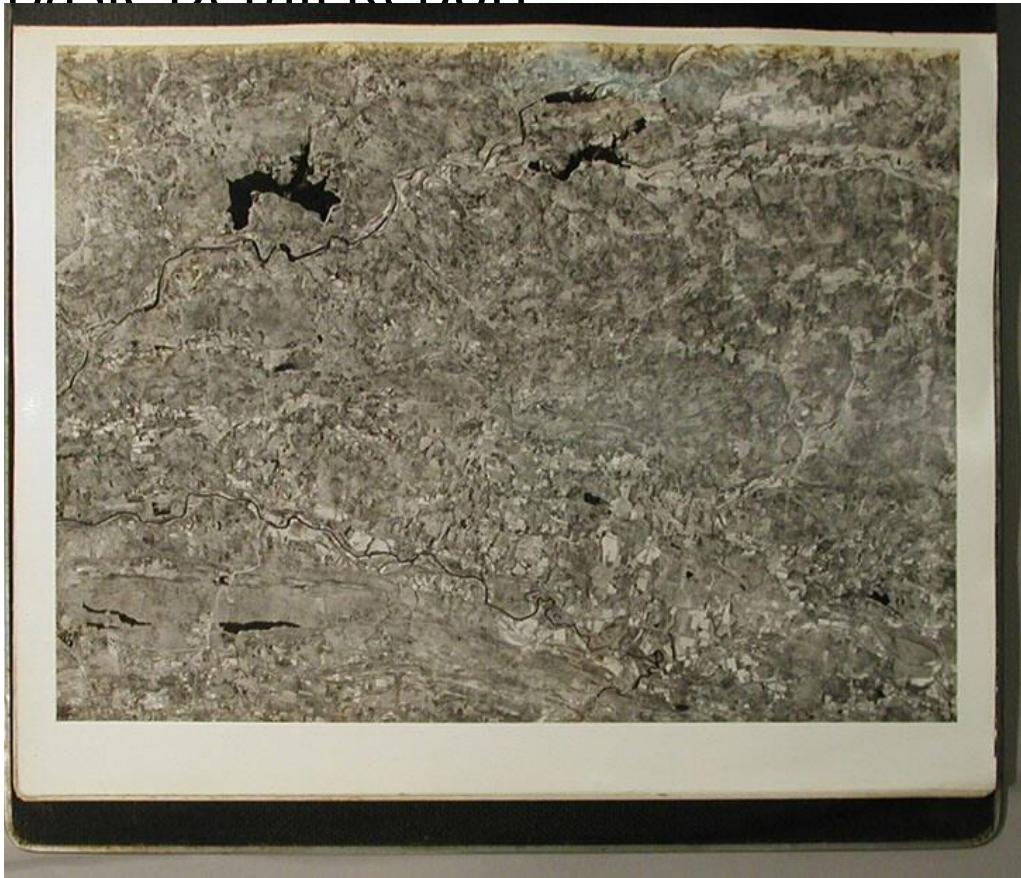


Basic Detail Report



Title Aerial Survey Photographs

Date 1934

Primary Maker Fairchild Aerial Surveys, Inc.

Medium Photography; gelatin silver prints on paper Album: Cardboard, metal and masonite, with cloth tape.

Description Aerial mosaic views of areas in Connecticut, and in Massachusetts and New York along the Connecticut border. Features include populated areas, roads, rivers, lakes, farms, dwellings, commercial buildings, geological landscapes, and the shoreline of Long Island Sound.

Dimensions Primary Dimensions (image height x width): 15 3/4 x 12in. (40 x 30.5 cm) Sheet (height x width): 16 7/8 x 14in. (42.9 x 35.6cm) Other (album height x width x depth): 17 1/2 x 17 1/8 x 3in. (44.5 x 43.5 x 7.6cm)