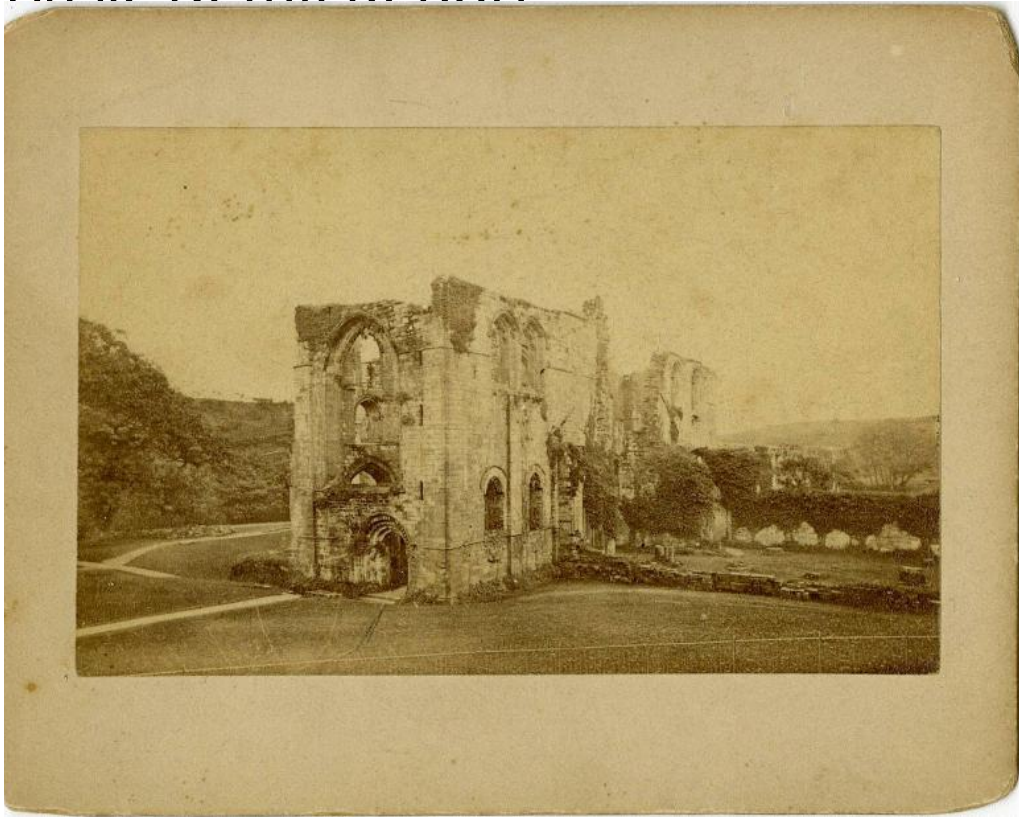


Basic Detail Report



Title Gaylord Family Trip to England

Date 1893

Primary Maker Unknown

Medium Photography; albumen prints on paper on cardboard mount

Description The ruins of a medieval abbey are situated in a desolate landscape with a high hill at the left and trees and water at the right. Gravestones in a cemetery are surrounded by an iron fence.

Dimensions Primary Dimensions (image height x width): $2\frac{3}{8} \times 3\frac{7}{8}$ in. (6 x 9.8 cm) Sheet (height x width): $2\frac{3}{8} \times 3\frac{7}{8}$ in. (6 x 9.8cm) Mount (height x width): $3\frac{1}{2} \times 4\frac{1}{2}$ in. (8.9 x 11.4cm)