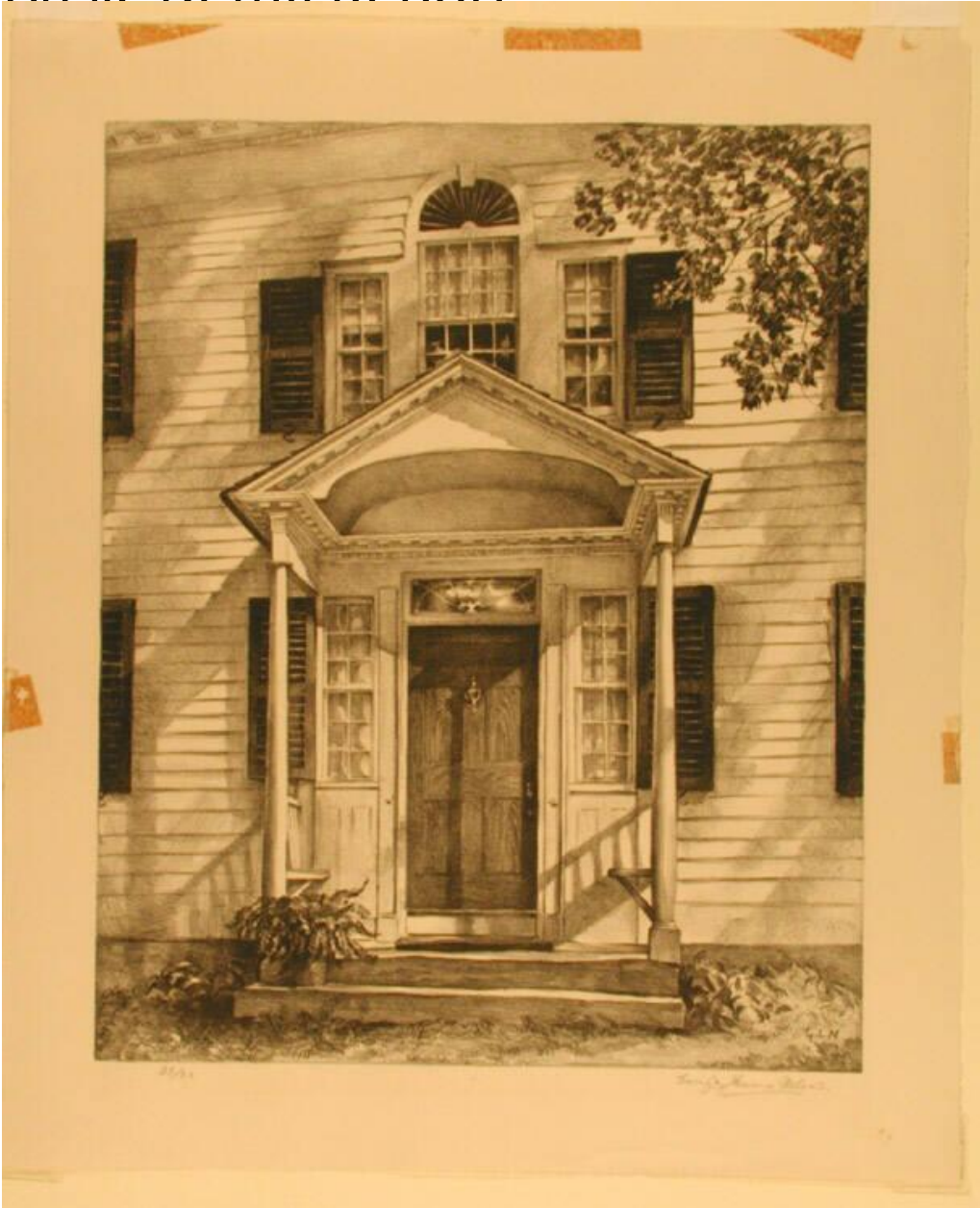


# Basic Detail Report



## Title Penrhyn House, Kent, CT

Date mid 20th century

Primary Maker George Laurence Nelson

Medium Lithography; printer's ink on wove paper

Description Doorway and center facade of a late eighteenth- or early nineteenth-century frame house with clapboard siding and louvered shutters. The porch roof has a pediment with dentil moldings, supported on thin colonnettes. There

# Basic Detail Report

are wooden benches on the porch on either side of the doorway. The door has a knocker, sidelights, and a fanlight. A potted fern is on the doorstep at the left; a doormat is in front of the door. There is a Palladian window above the porch. A tree branch is at the upper right. Shadows from additional trees are on the front of the house.

Dimensions Primary Dimensions (image height x width): 13 1/2 x 11in. (34.3 x 27.9 cm) Sheet (height x width): 16 1/2 x 13 3/4in. (41.9 x 34.9cm)