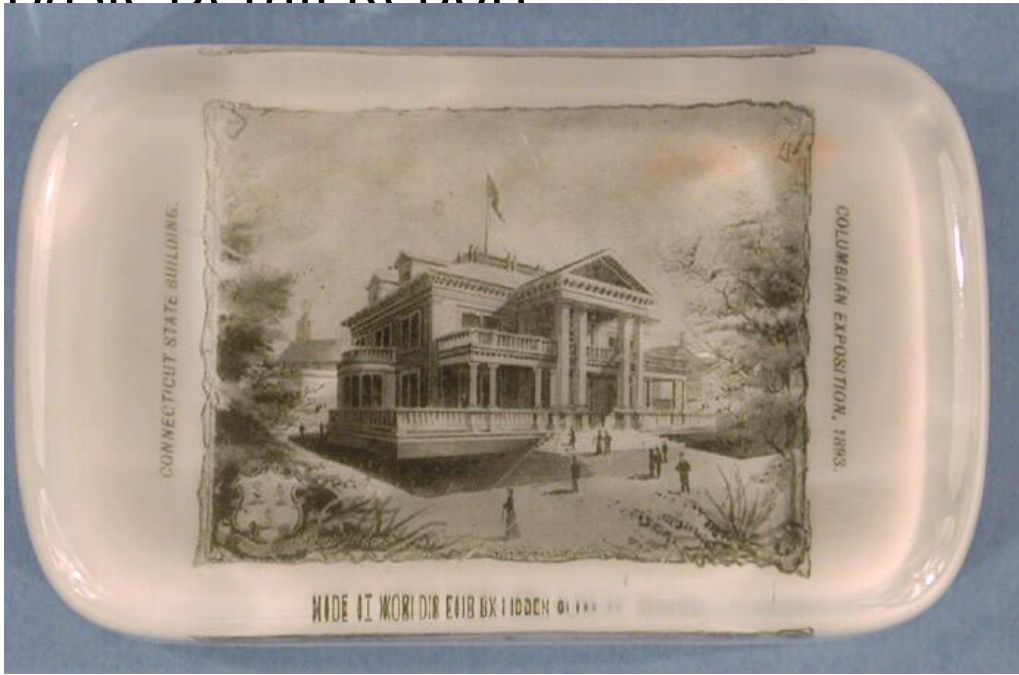


Basic Detail Report



Title Paperweight

Date 1893

Primary Maker Libbey Glass Co.

Medium Pressed colorless glass with black and white transfer decoration

Description Pressed colorless glass paperweight with black and white transfer decoration. The paperweight consists of a rectangular glass block with smooth edges and corners. The bottom surface of the paperweight is recessed. A design, applied using a black and white transfer printing process, is applied into this recessed area and is visible through the top of the paperweight. The design shows a printed photographic image of a two-story building with a low hipped roof, a ballustrade, a projecting portico, and at least two porches. A flag flies above the building. The building is surrounded by a lawn and trees, and the whole image is set inside a square border. The lower left corner of the border contains a shield with three grape vines next to the word, "COPYRIGHTED". To

Basic Detail Report

the left of this scene are the words, "CONNECTICUT STATE BUILDING". To the right of the scene are the words, "COLUMBIAN EXPOSITION, 1893". Below are the words, "MADE AT WORLD'S FAIR BY LIBBEY GLASS CO. PATENTED. There are several light scratches on the top surface of the paperweight.

Dimensions Primary Dimensions (height x width x depth): $7/8 \times 3 \frac{7}{8} \times 2 \frac{3}{8}$ in.

(2.2 x 9.8 x 6cm)