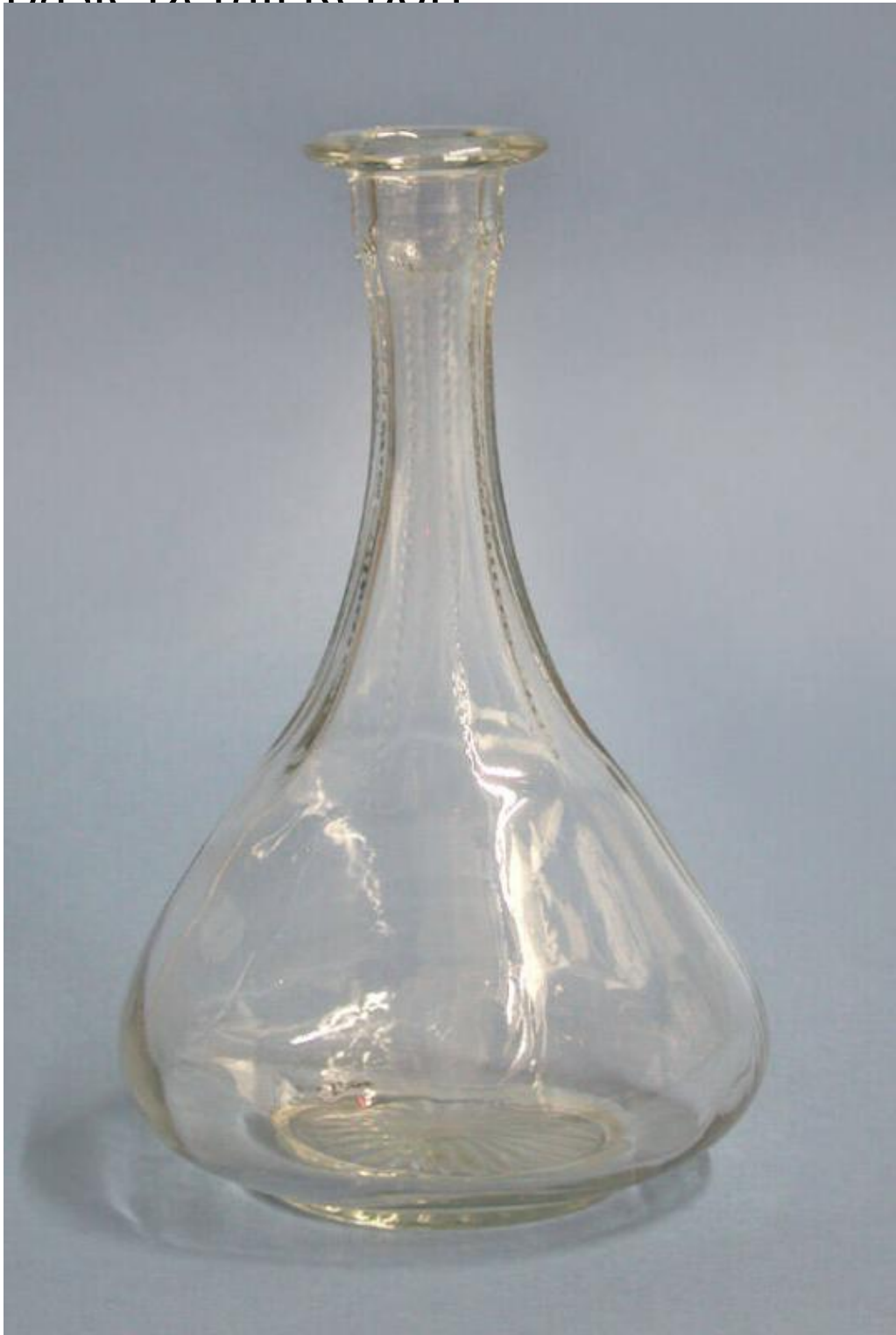


Basic Detail Report



Title Carafe

Date 1880-1900

Primary Maker Unknown

Medium Mold-blown colorless glass

Basic Detail Report

Description Mold-blown colorless glass carafe with a thick flared lip, an

elongated neck, a low sloping shoulder above a compressed globular body, and

a round foot on the bottom. The elongated neck has ten flutes, the edges of

which have small, raised notches. The bottom of the foot has a round, rayed

pattern.

Dimensions Primary Dimensions (height x diameter): 9 1/4 x 5 3/4in. (23.5 x 14.6

cm)