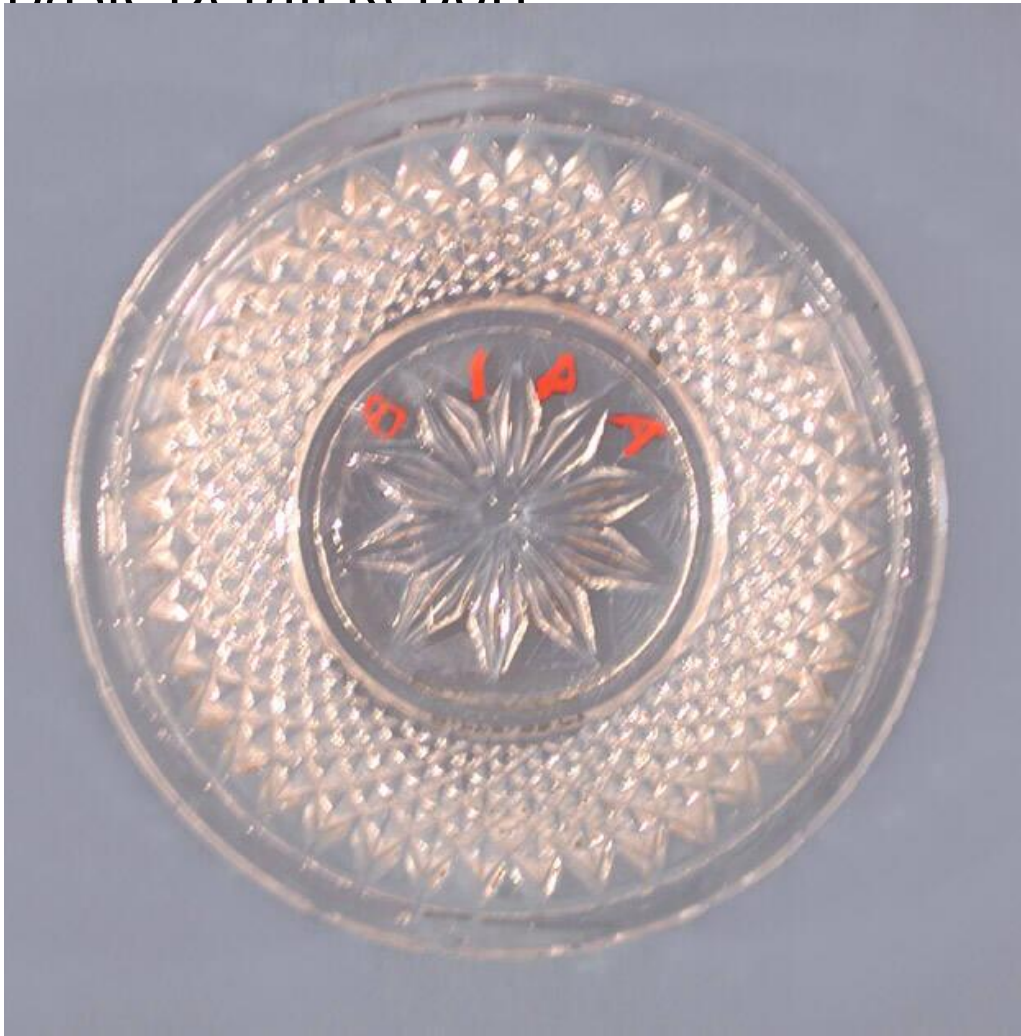


Basic Detail Report



Title Dish

Date 1860-1880

Primary Maker Unknown

Medium Pressed colorless lead glass

Description Pressed colorless lead glass dish with a plain rim, ogee-curved sides, and a circular foot. The pattern, pressed into the underside, consists of a ten-pointed star on the bottom. The sides are decorated with an all-over pattern of sharp, raised diamonds, known as the "Sharp Diamond" or "Diamond Point" pattern. The edge of the rim has four small chips.

Dimensions Primary Dimensions (diameter): 3 1/2in. (8.9cm)