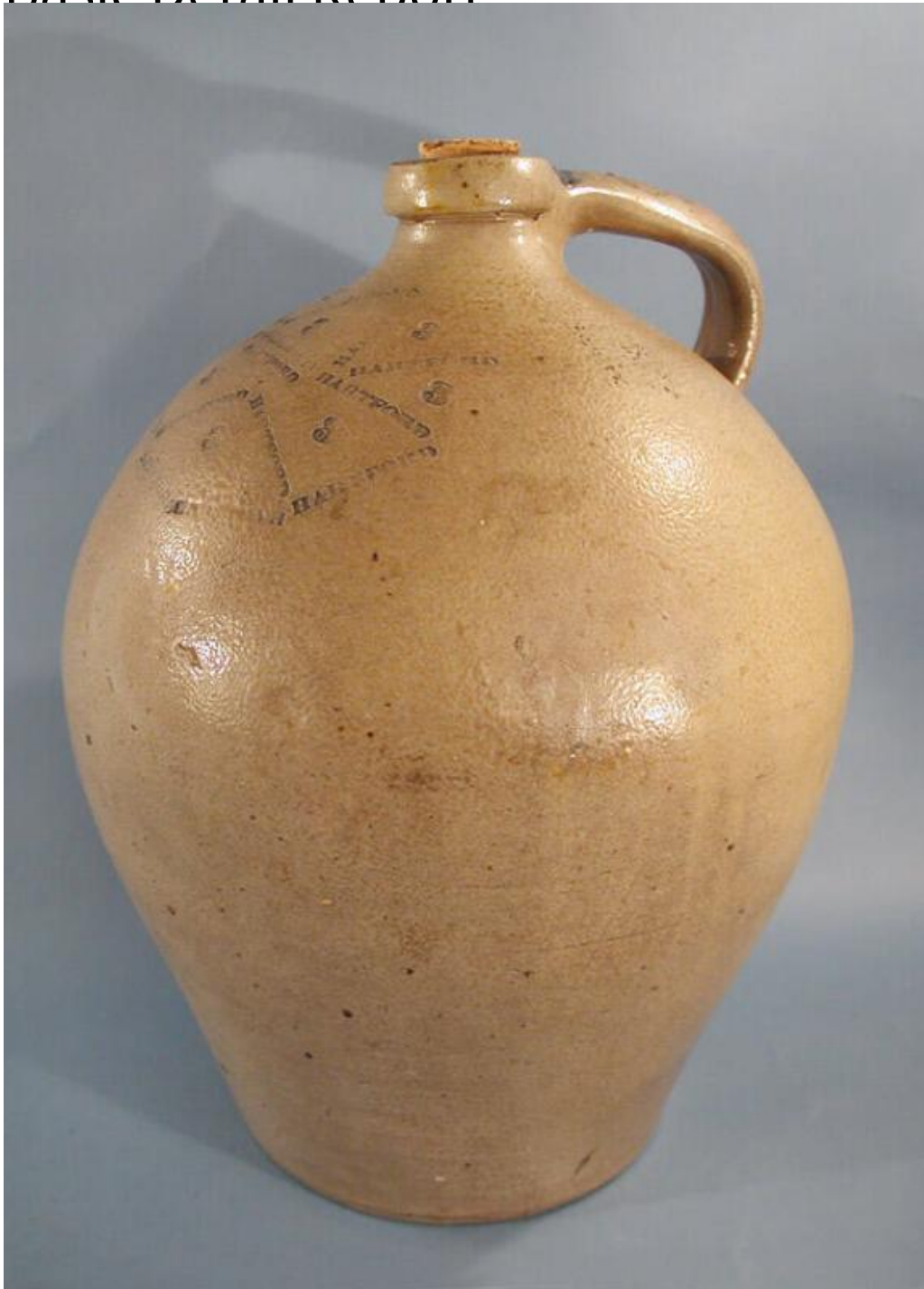


Basic Detail Report



Title Jug

Date early 19th-mid 19th century

Primary Maker Thomas O'Hara Goodwin

Medium Wheel-thrown stoneware with a salt glaze, brown slip glaze, and cobalt blue decoration; cork

Basic Detail Report

Description Three-gallon, grey, ovoid, stoneware jug with a salt glaze on the

interior and a brown slip glaze, or Albany-type glaze, on the interior. The jug (.a)

has a thick collar at the rim, a short neck, rounded shoulders, and an ovoid body

that tapers to a flat bottom. A pulled, strap handle connects the rim with the

shoulder of the jug. Opposite the handle is the impressed maker's mark, "T O

GOODWIN/ HARTFORD". This is surrounded by "HARTFORD" impressed twelve

times in an abstract, geometric pattern. Eight spaces between the impressed

mark are decorated with an impressed mark of "3". All the marks are decorated

with cobalt blue. Cobalt blue has also been applied to each end of the handle.

There is a kiln scar on the handle and a tapered cork (.b) in the neck.

Dimensions Primary Dimensions (height including cork x diameter): 15 x 10in.

(38.1 x 25.4cm)