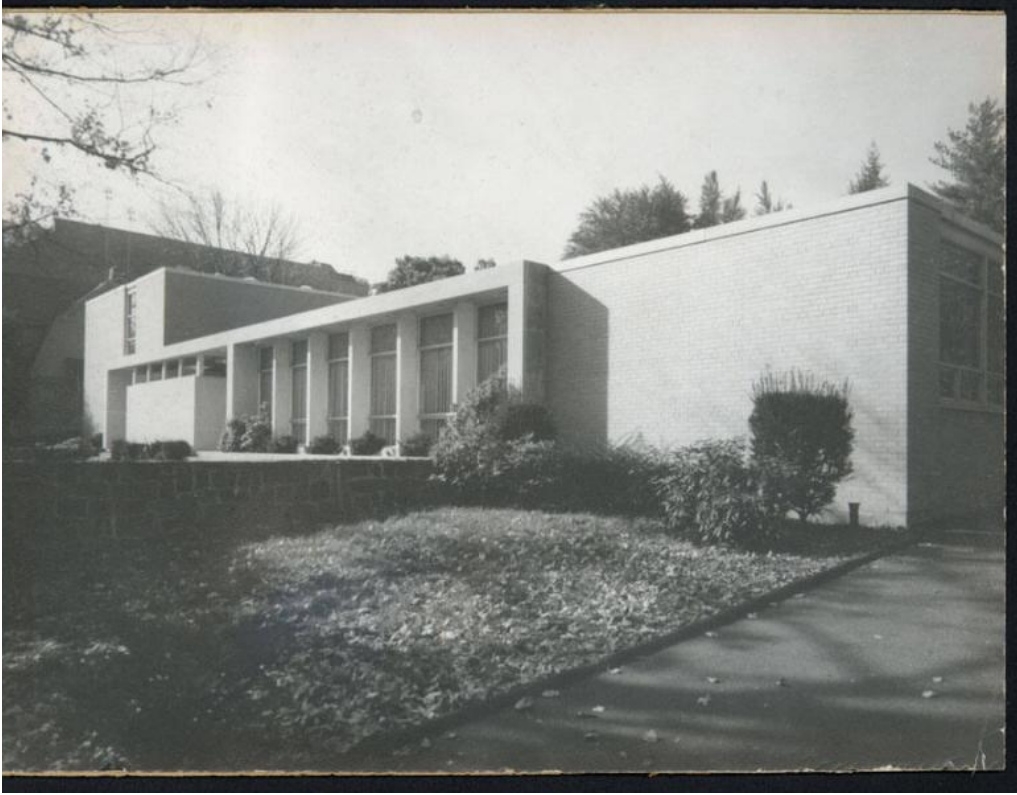


# Basic Detail Report



## **Title St. Luke's Church and Rectory**

Date 1953-1955

Primary Maker John J. McMahon

Medium Drawings; pencil, red and blue pencil, and black ink or ink stamp on paper. Blueprints; cyanotypes.

Description Plans, elevations, sections, and details showing present, proposed, and revised building, plot, and landscaping features. These include floor plans of cellar utility areas and finance room; first and second floor clergy and maid's rooms, kitchen, dining room, and public spaces; elevations showing front, side, and rear views; details noting plumbing, heating, ventilation, exhaust, air conditioning, electrical, and drainage systems. Several indicate material and construction specifications. .1-.14 include a set of rough drawings and sketches, placed together in a blueprint paper folder, marked in pencil: "SKETCHES/ST

# Basic Detail Report

LUKE'S RECTORY". .25-.29 include preliminary floor plans of basement to attic levels, with heating and air conditioning specifications.

Dimensions Primary Dimensions (image height x width): 21 x 41in. (53.3 x 104.1

cm) Sheet: (height x width) 25 1/4 x 43 1/4in. (64.1 x 109.9cm) and smaller.