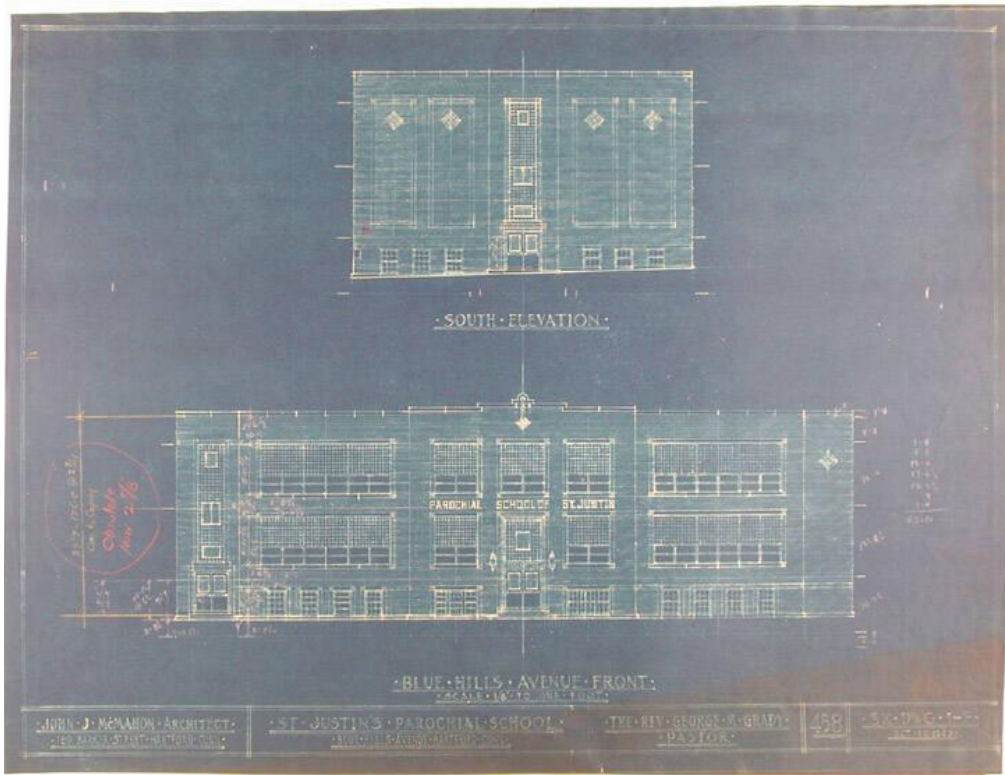


# Basic Detail Report



## Title St. Justin Church, School, and Convent

Date 1949-1953

Primary Maker John J. McMahon

Medium Drawings; pencil on paper, colored pencil. Blueprints; cyanotypes on paper.

Description Plans, elevations, and sections of church, school, and convent buildings, showing entrances, stairways and walkways, classrooms, teachers' rooms, library, storage areas, basement boiler room and incinerator, and toilets.

Materials used for doors, windows, pipe enclosures, partitions, windows, and corkboards are indicated. Alterations and renovations are noted for the foundation and convent. Plot plans are included, showing landscape features and property lines.

# Basic Detail Report

Dimensions Primary Dimensions (image height x width): 20 x 39 1/2in. (50.8 x

100.3cm) and smaller. Sheet (height x width): 22 3/4 x 42in. (57.8 x 106.7cm) and

smaller.