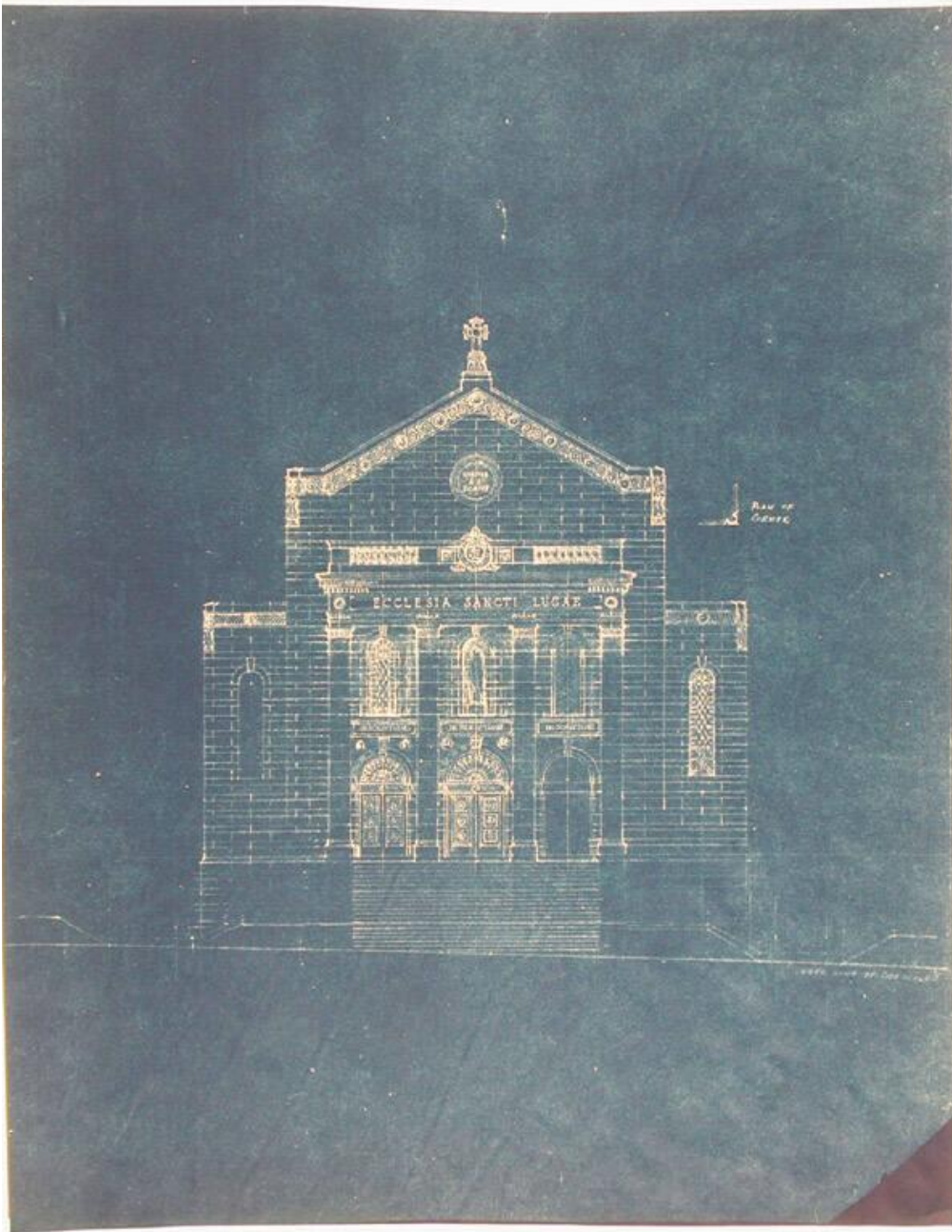


Basic Detail Report



Title St. Luke's Church

Date 1930-1931

Primary Maker John J. McMahon

Medium Drawings; pencil and red pencil on paper, black and colored ink on tracing linen. Blueprints; cyanotypes on paper.

Basic Detail Report

Description Plans, elevations, and sections showing interior and exterior church

building and adjoining community space, including basement utility and storage

areas, and main floor and first floor sanctuary, nave, and choir space.

Preliminary sketches indicate existing areas and proposed changes. Plot plans

and surveyor's plans show additions to church building and placement of tennis

courts. An original drawing of a stained glass emblem is included.

Dimensions Primary Dimensions (image height x width): 20 x 35in. (50.8 x 88.9

cm) Sheet (height x width): 24 x 36in. (61 x 91.4cm) and smaller.