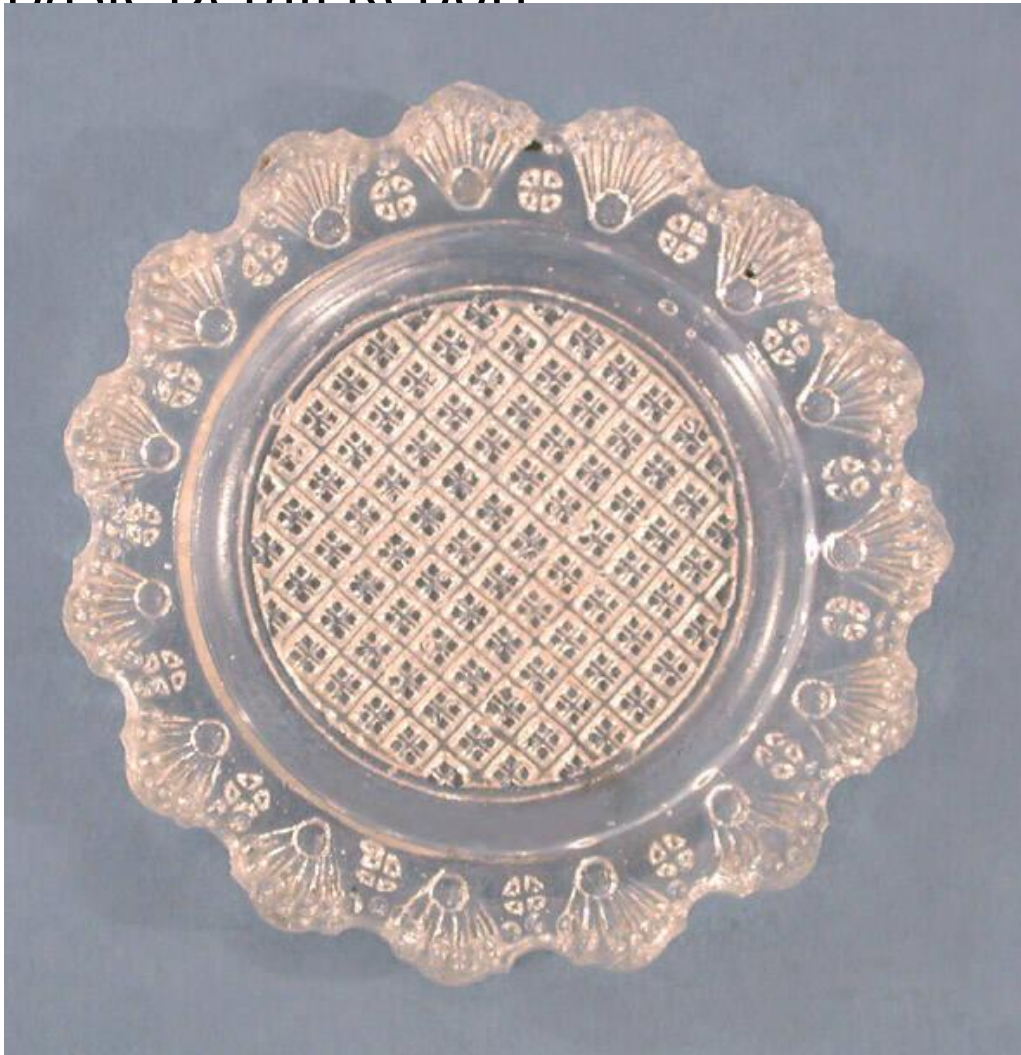


Basic Detail Report



Title Cup Plate

Date 1830-1840

Primary Maker Unknown

Medium Pressed colorless lead glass

Description Thick, pressed colorless lead glass cup plate with a scalloped rim and a line of raised dots following the scalloped edge on the top surface. The remainder of the pattern is pressed into the underside of the cup plate. It consists of a field of quartered squares, or waffles, in the center of the cup plate. At the rim, fans fit into each scallop of the rim, with small quartered circles between. There are many chips at the scalloped edges of the cup plate.

Basic Detail Report

Dimensions Primary Dimensions (diameter): 3 3/8in. (8.6cm)