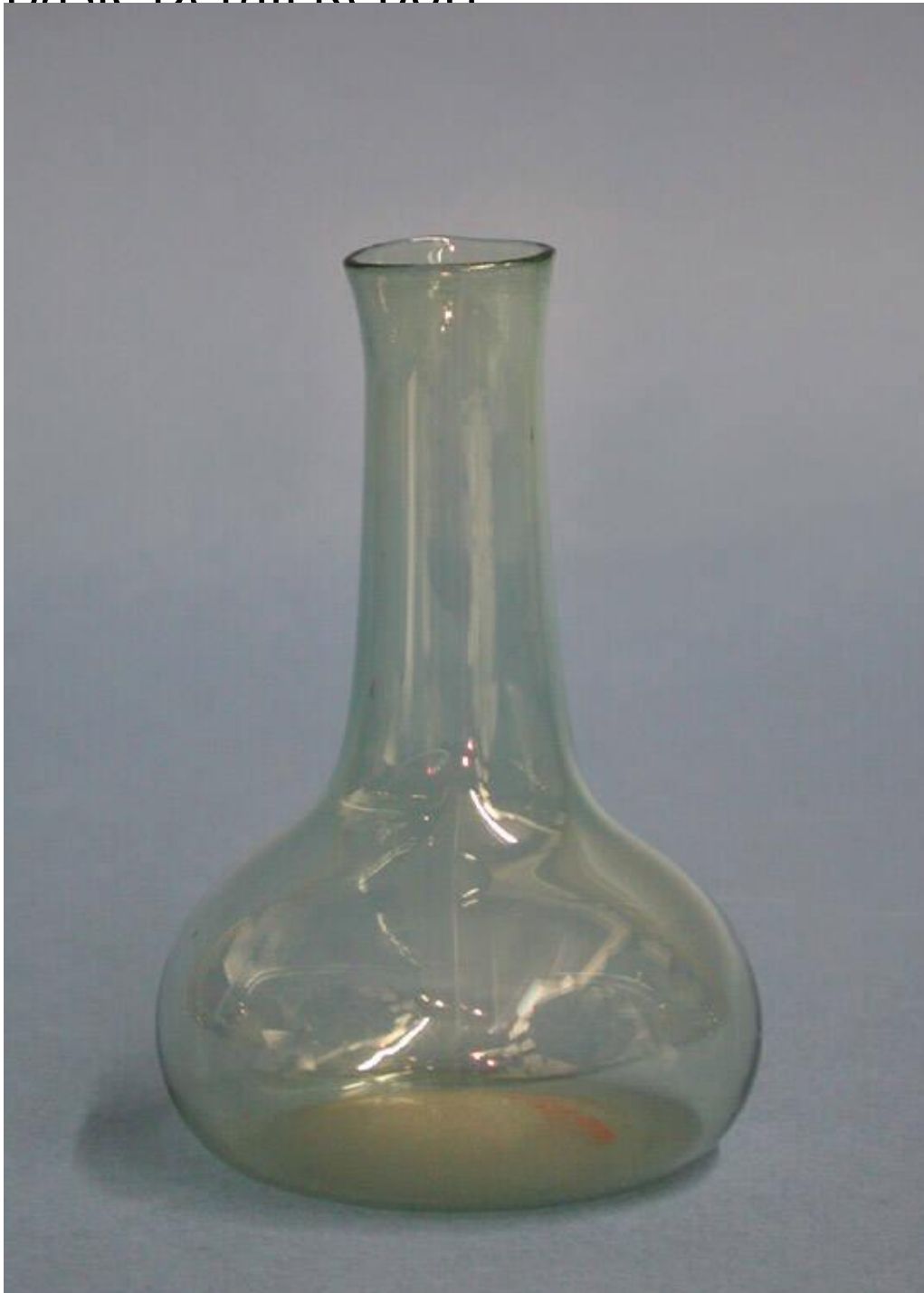


Basic Detail Report



Title Bottle

Date 1800-1900

Primary Maker Unknown

Medium Blown light green glass

Basic Detail Report

Description Thin-walled, blown light green glass bottle. The bottle has a plain, slightly flared rim, a cylindrical neck, a globular body, and a shallow kick on the bottom. Kick: An indentation in the bottom of a drinking glass, bottle, or other glass object.

Dimensions Primary Dimensions (height x diameter): 5 x 3 1/4in. (12.7 x 8.3cm)