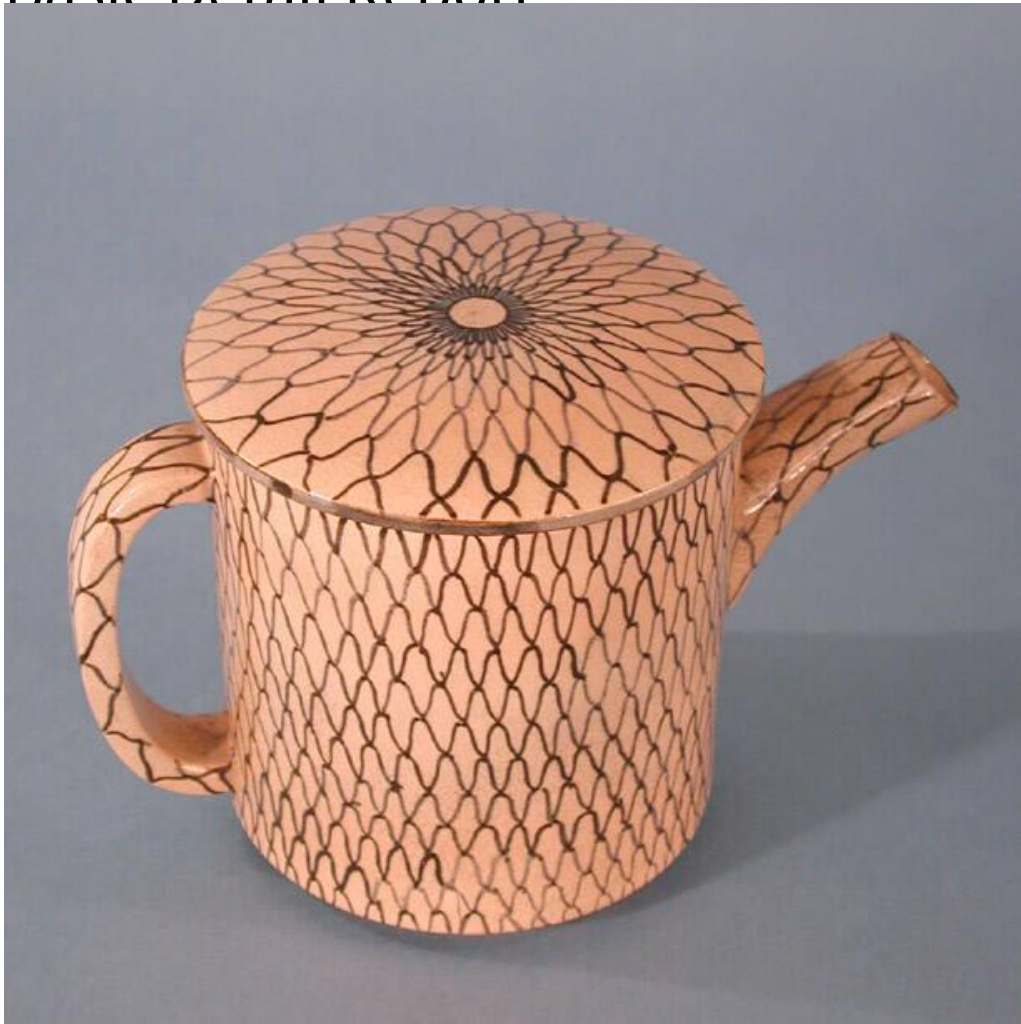


Basic Detail Report



Title Teapot

Date 1900-1950

Primary Maker Unknown

Medium Mechanically-molded stoneware with underglaze cobalt blue decoration

Description Round, tan, stoneware lidded teapot with hand-painted underglaze cobalt blue decoration. The body of the teapot (.a) is cylindrical, with a flat base and a horizontal rim. A mold-formed handle has been applied opposite the spout. The lid (.b) is only slightly domed, and it has no finial. The entire teapot is decorated with lines of hand-painted underglaze cobalt blue. Short, curved lines

Basic Detail Report

are repeated many times, in rows and columns, to form an overall diamond, or

netting, pattern. This continues on the lid, ending in a circle at the center of the

lid. All of the glazed surfaces of the teapot show significant crazing. There is a

small chip at the tip of the spout. There are two cracks that curve around

opposite sides of the outside of the foot, but they do not continue to the inside

of the teapot.

Dimensions Primary Dimensions (height including lid x width x depth): 5 1/4 x 8 1

/2 x 5in. (13.3 x 21.6 x 12.7cm)