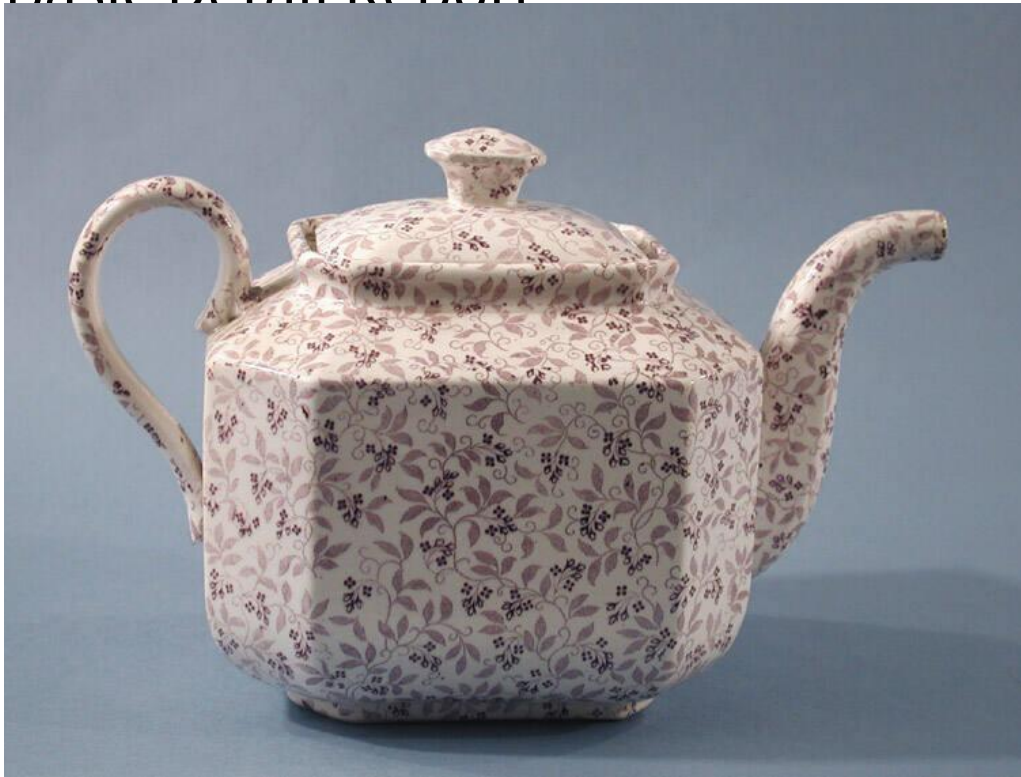


Basic Detail Report



Title Teapot

Date about 1830-1860

Primary Maker Unknown

Medium Mold-formed buff-colored earthenware with a blue-tinted glaze and underglaze purple decoration

Description Teapot made of buff-colored earthenware with a blue-tinted glaze, a type of ceramic known as pearlware. The teapot (.a) has a rectangular shape with canted corners and has a molded and applied handle and spout at opposite ends. The teapot has a transfer-printed, underglaze purple decoration consisting of very small flowers and leaves in light and dark purple printed over the surface of the teapot, spout, and handle. The teapot has a rectangular lid (.b) with a small rectangular finial and a small hole in the ceramic to one side of the finial. The lid has the same purple decoration as the body of the teapot. There

Basic Detail Report

are two long cracks running the length of the teapot, along the foot, and a few

smaller cracks emerging from the larger ones. A few spots of light brown

discoloration are located on the bottom of the teapot.

Dimensions Primary Dimensions (height including lid x width x depth): 6 1/4 x 9 1

/8 x 4 1/2in. (15.9 x 23.2 x 11.4cm)