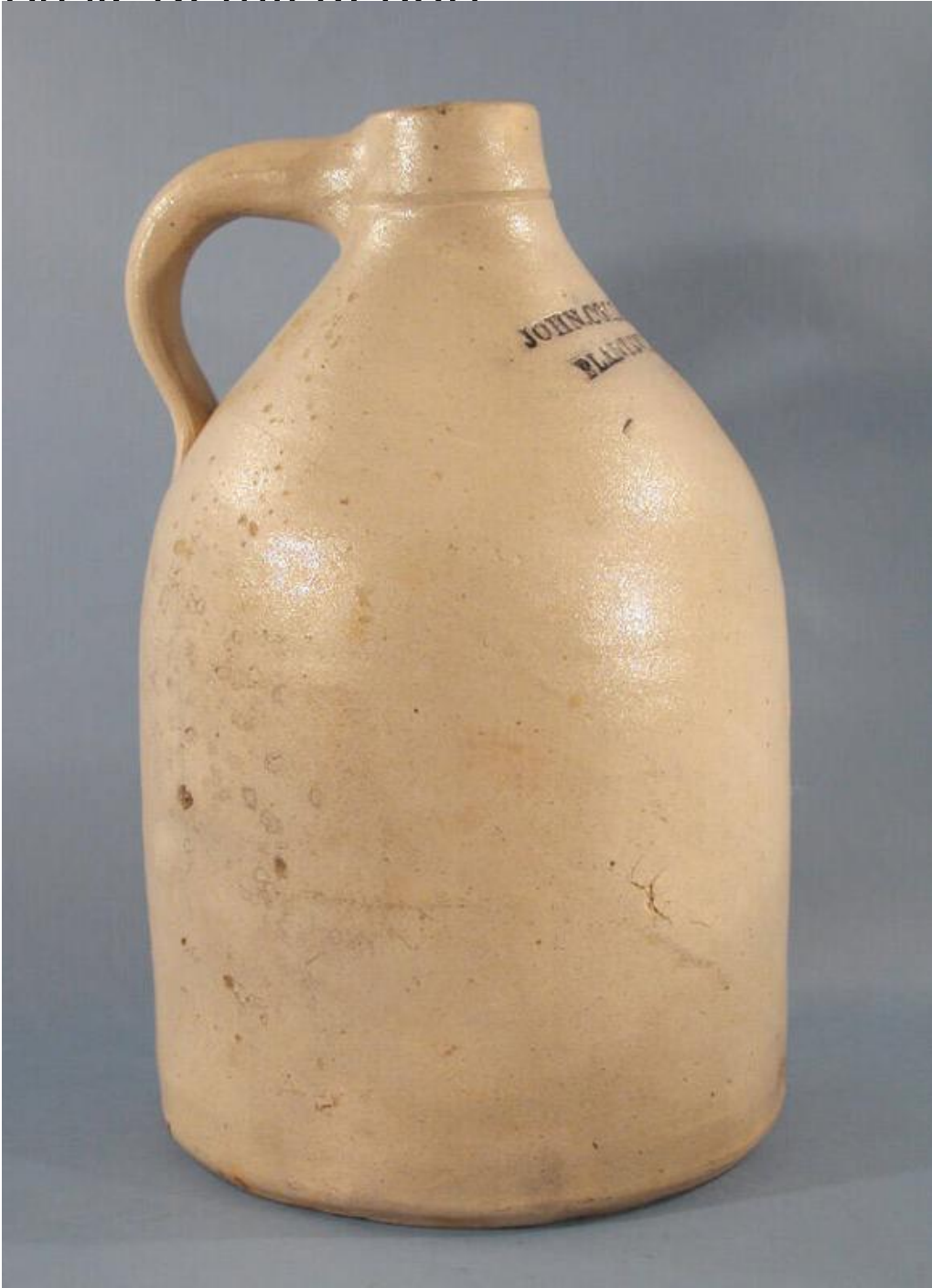


Basic Detail Report



Title Jug

Date late 19th-early 20th century

Primary Maker John Collings

Medium Wheel-thrown salt-glazed stoneware jug with cobalt blue decoration

Basic Detail Report

Description Cylindrical, light grey stoneware jug with a salt glaze exterior and cobalt blue decoration; the inside of the jug is coated in a brown slip glaze, or Albany-type slip glaze. The lower half of the jug is cylindrical, before the shoulders gradually slope to a straight neck and rim. A pulled strap handle connects the neck to the shoulders of the jug. Opposite the handle is an impressed mark, "JOHN.COLLINGS/ PLANTSVILLE". The capital letters are colored with cobalt blue. Multiple chips and areas of loss to the surface of the jug are located to the lower right of the impressed mark. Similar chips, as well as a long crack, appear to the left of the impressed mark.

Dimensions Primary Dimensions (height x diameter): 11 1/2 x 7 3/8in. (29.2 x 18.7 cm)