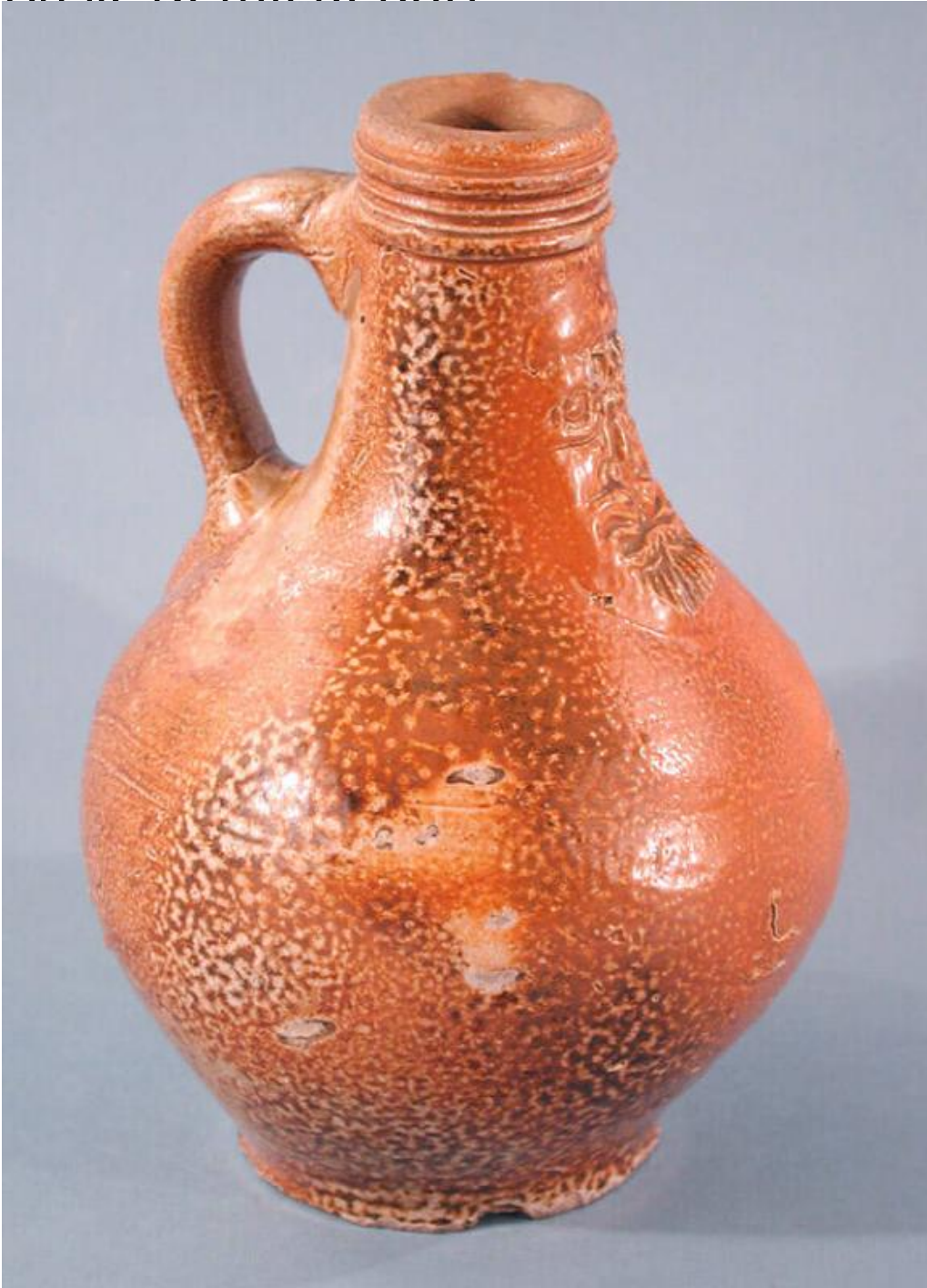


# Basic Detail Report



**Title Bartmann Jug**

Date 17th century

Primary Maker Unknown

Medium Wheel-thrown salt-glazed stoneware

# Basic Detail Report

Description Small, brown, ovoid, salt-glazed stoneware jug; this is a form known as a "Bartmann" or "Bellarmine" jug. The bellarmine jug has a reeded rim, tapered, elongated neck, ovoid body and a round, flat bottom. To one side of the bellarmine jug, a pulled strap handle connects the neck with the shoulder. Opposite the handle, a sprig-molded face of a bearded man wearing a hat is applied to the ceramic. There is a large chip in the rim, and several small chips circling the foot.

Dimensions Primary Dimensions (length including handle x width x height ): 3 x 1 3/8 x 7in. (7.6 x 3.5 x 17.8cm)