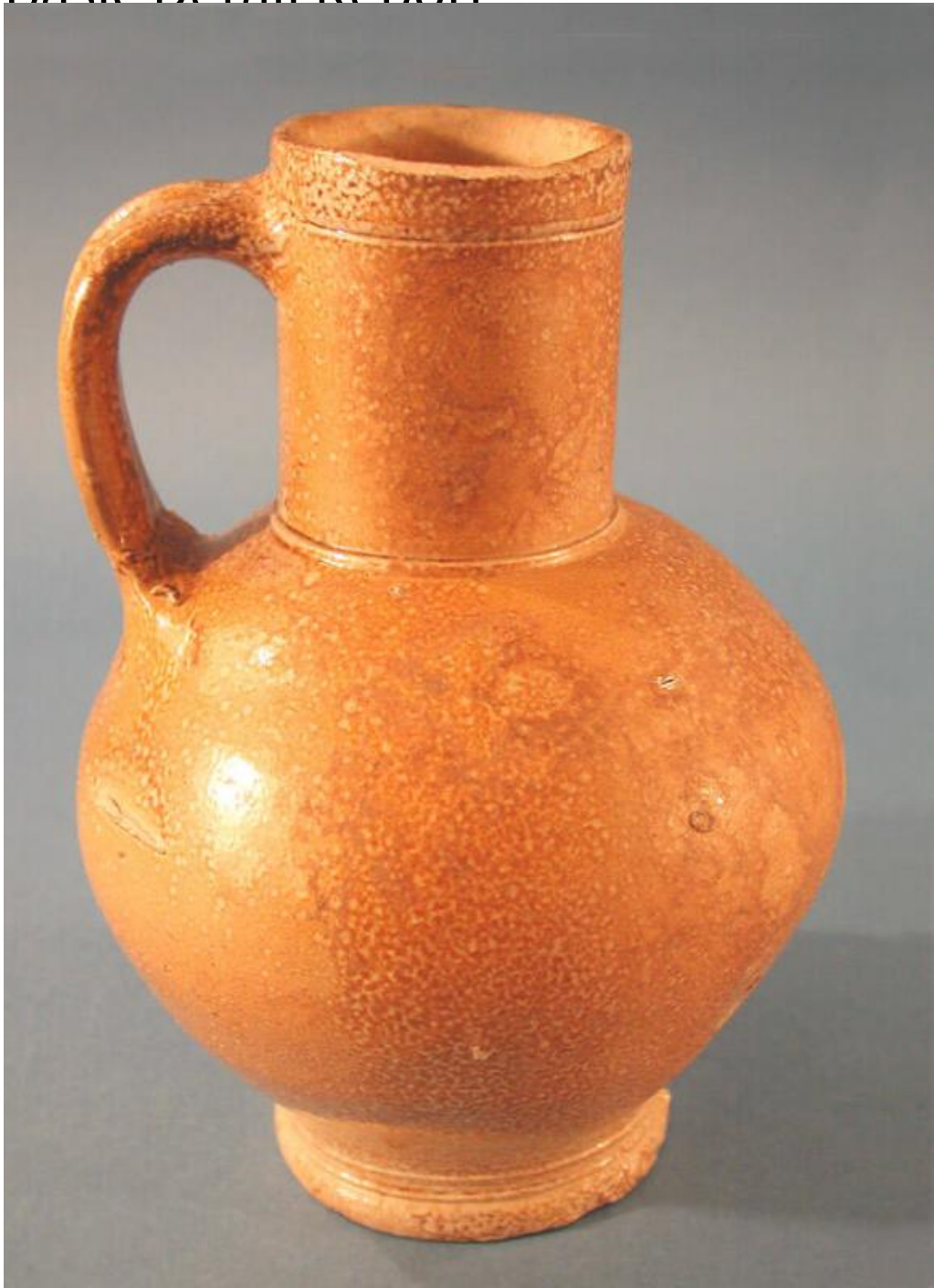


Basic Detail Report



Title Jug

Date about 1625-1650

Primary Maker Unknown

Medium Wheel-thrown stoneware with a salt glaze

Basic Detail Report

Description Buff-colored stoneware jug with a flat, circular foot, spherical body, and cylindrical neck and rim. The exterior of the jug is covered with a mottled, tan salt glaze; the inside is not glazed. There is an incised line just below the rim and a raised line where the neck and body of the jug meet. A pulled strap handle has been applied to connect the rim and body of the jug. There are many imperfections in the surface of the jug, especially near the handle. A long, shallow chip is located on the rim, to the right of the handle. There are some hairline cracks in the glaze on the body and neck of the jug.

Dimensions Primary Dimensions (length including handle x width x height): 4 1/4 x 2 5/8 x 8 7/8in. (10.8 x 6.7 x 22.5cm)