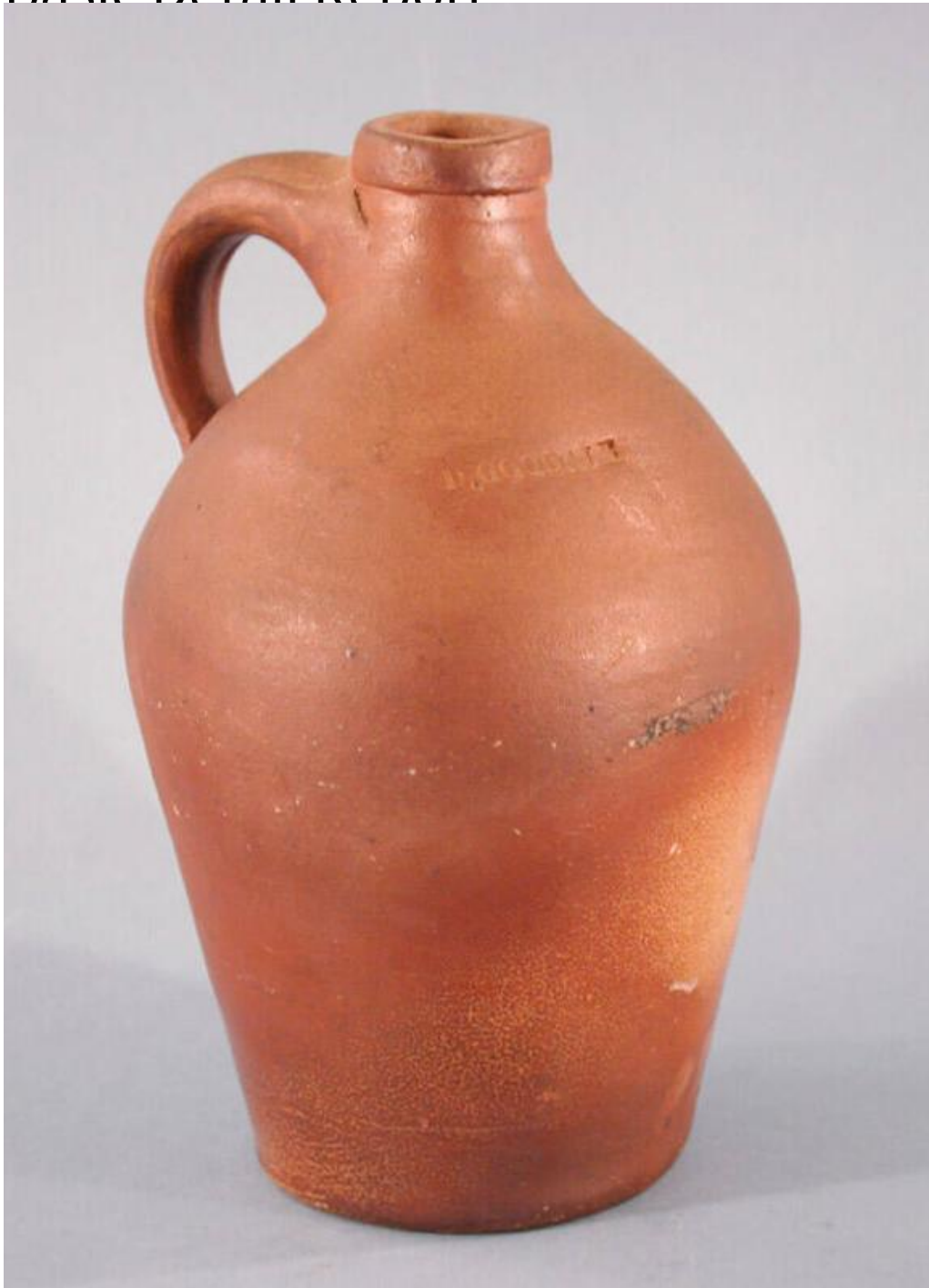


Basic Detail Report



Title Jug

Date 1825-1830

Primary Maker Daniel Goodale Jr.

Medium Wheel-thrown stoneware with a brown glaze

Basic Detail Report

Description Small, round, stoneware jug with a brown glaze, possibly a slip, or

Albany-type glaze. A ridged strap handle connects the neck and shoulder of the

jug. Opposite the handle is an impressed maker's mark, "D.GOODALE". The

brown glaze is somewhat glossy on the lower half of the jug, but matte on the

top half. There are several imperfections in the glaze, probably the result of

firing in the kiln.

Dimensions Primary Dimensions (length including handle x width x height): 3 x 1

1/4 x 7 1/4in. (7.6 x 3.2 x 18.4cm)