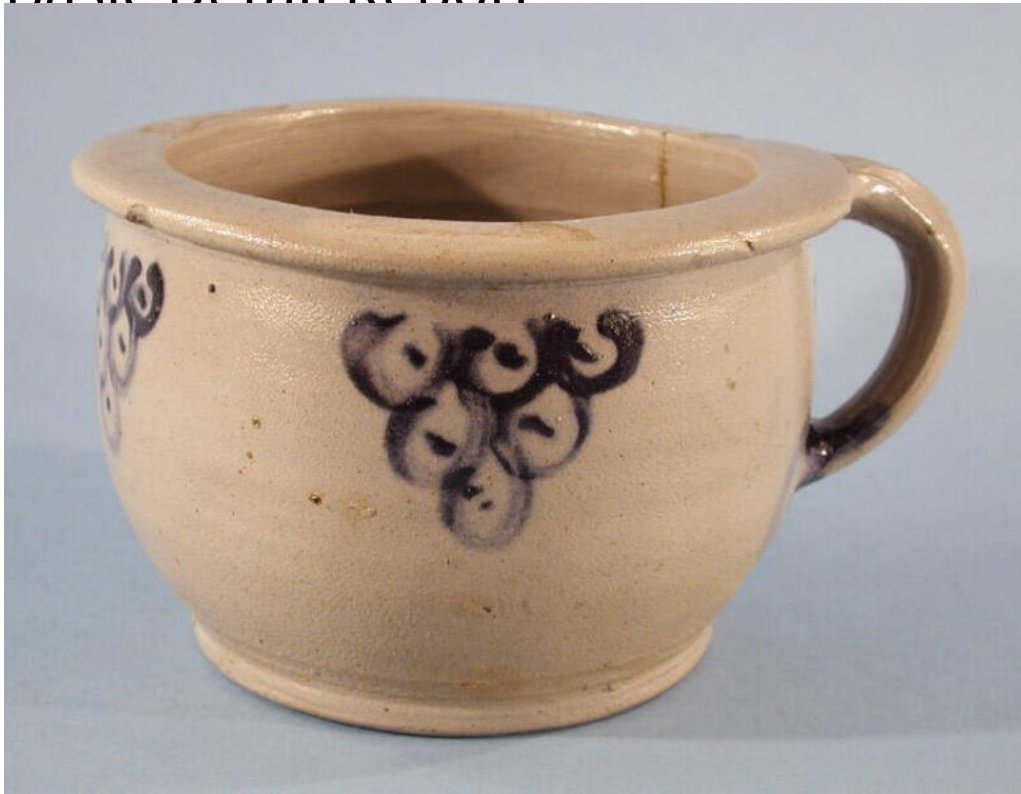


Basic Detail Report



Title Chamber Pot

Date about 1790

Primary Maker Abraham Mead

Medium Wheel-thrown salt-glazed stoneware with cobalt blue decoration

Description Round, stoneware chamber pot with a salt glaze and cobalt blue decoration. The chamber pot has a pulled, strap handle that connects the wide rim to a point about three-quarters down the side of the chamber pot. Cobalt blue decoration has been applied at the base of the handle; it consists of three circles with dots in the center, or fishscales. Opposite the handle are a row of three fishscale decorations, each consisting of an inverted triangular configuration of cobalt blue circles with a dot in the center. A series of

Basic Detail Report

concentric curved lines and ovals covers the bottom of the chamber pot. There is one crack in the side of the chamber pot that extends from the rim to the foot to the right of the handle.

Dimensions Primary Dimensions (height x width including handle x depth): 5 x 9 x 7 3/4in. (12.7 x 22.9 x 19.7cm)