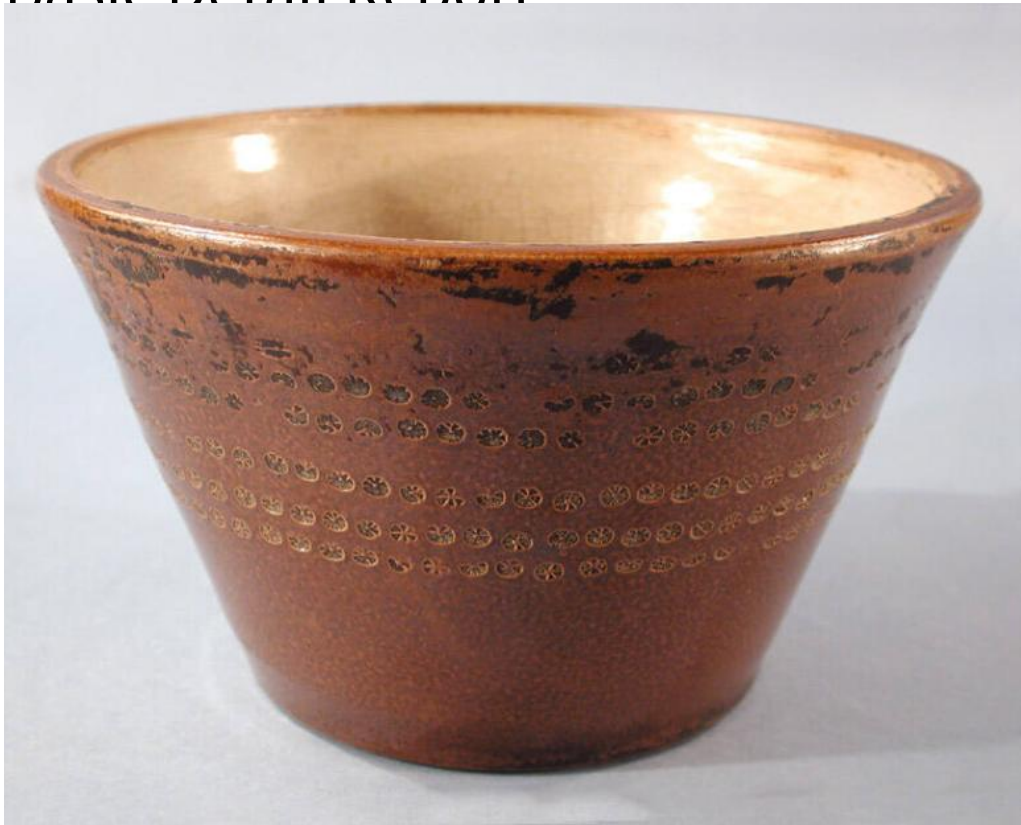


# Basic Detail Report



## Title Bowl

Date 1850s

Primary Maker Mary Giddings Coult

Medium Mechanically-molded stoneware with a brown and grey glaze

Description Round, stoneware bowl with a flat foot and straight sides that expand to a plain rim. The exterior of the bowl is decorated with hand-stamped circles, each divided into six triangles. The line of impressed circles coils around the bowl five times. The exterior of the bowl is covered with a brown glaze, while the inside of the bowl is covered with a light grey glaze, possibly a Bristol glaze. At the time of manufacture, the glaze was removed from parts of top and inside edge of the rim of the bowl. There is crazing over all the glazed surfaces of the bowl. An unknown black substance has adhered to the exterior of the bowl, near

# Basic Detail Report

the rim and in the indentations along the top two inches of the outside of the

bowl. Much of this substance is now flaking off. Additionally, there are three

cracks on the inside of the bowl which do not extend to reach the rim.

Dimensions Primary Dimensions (height x diameter): 5 1/4 x 8 3/4in. (13.3 x 22.2

cm)