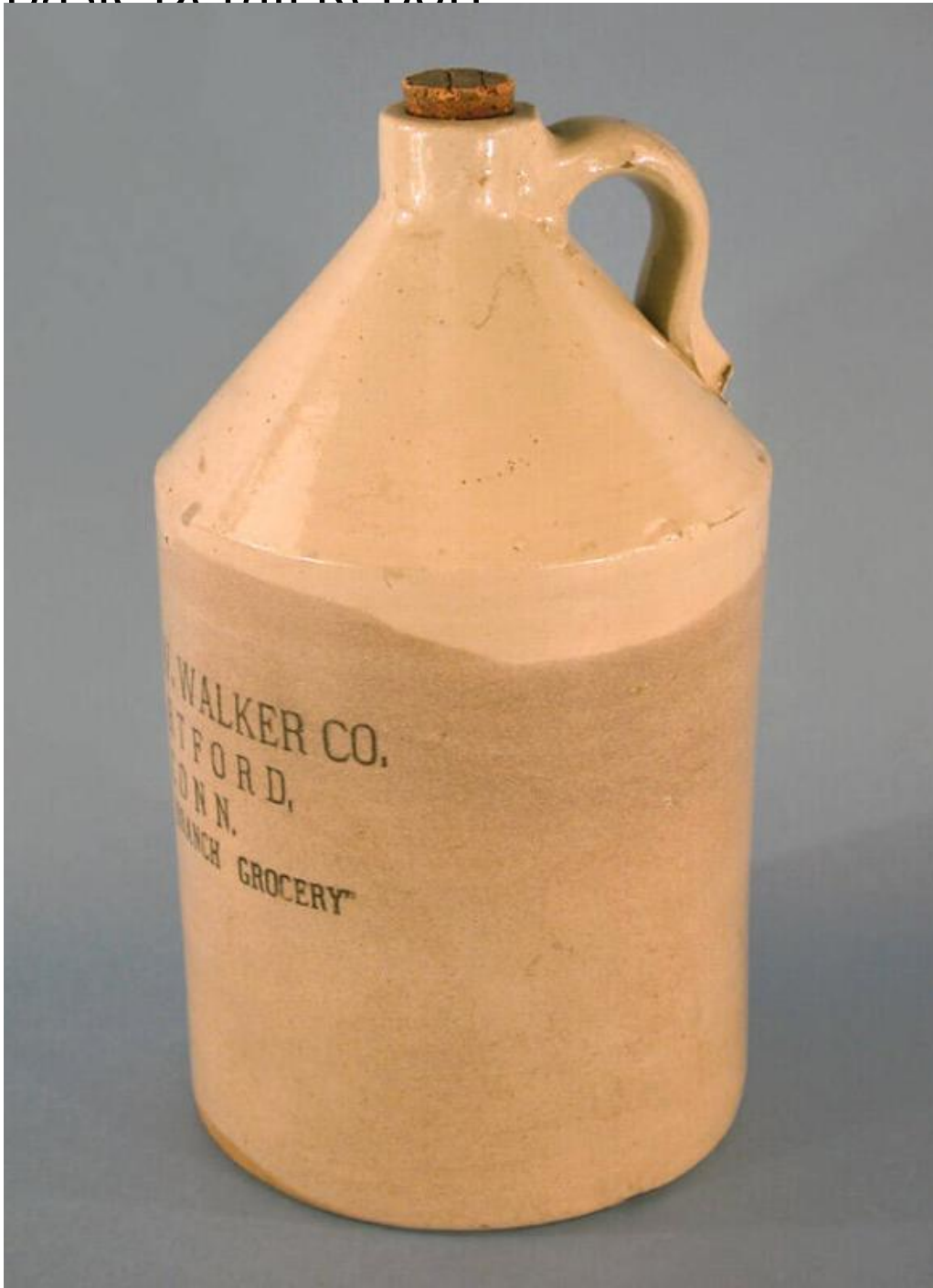


# Basic Detail Report



## Title Jug

Date 1889-1913

Primary Maker The Boston Branch Grocery, Inc.

Medium Mechanically-molded stoneware with a white glaze, and cork

# Basic Detail Report

Description Light grey stoneware jug with a cylindrical rim and cork, conical

shoulder, cylindrical body, and recessed bottom. An applied handle connects

the rim with the shoulder of the jug. The jug is glazed on the exterior with a light

cream glaze, or Bristol-type glaze. The retailer's name is printed in black on the

side of the jug opposite the handle, "THE W. W. WALKER CO./ HARTFORD, CONN.

/ BOSTON BRANCH GROCERY". There is a light brown discoloration on the lower

two thirds of the jug, and portions of the shoulder.

Dimensions Primary Dimensions (height including cork x diameter): 12 1/8 x 6 1

/2in. (30.8 x 16.5cm)