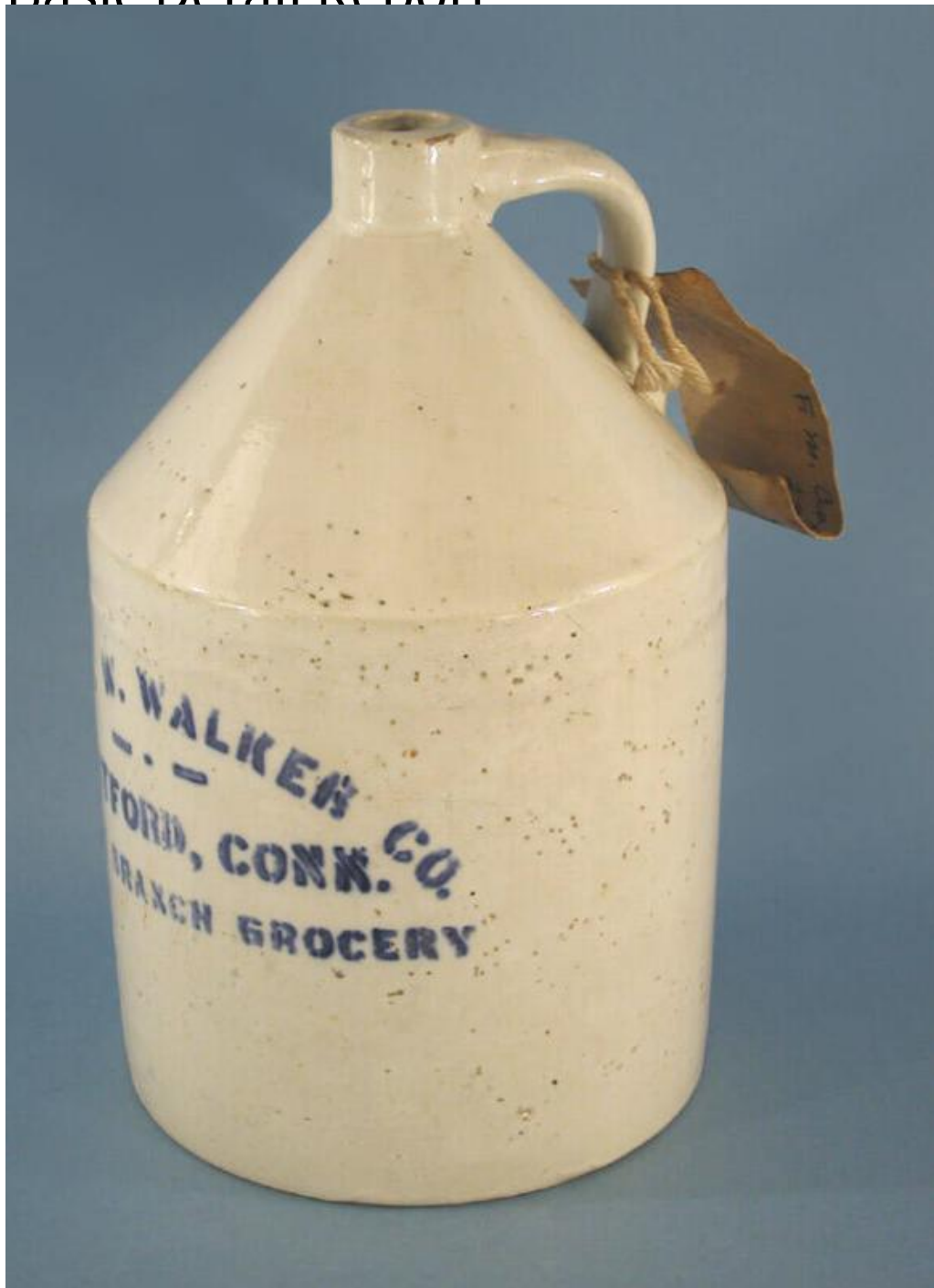


# Basic Detail Report



## Title Jug

Date 1889-1913

Primary Maker The Boston Branch Grocery, Inc.

Medium Mechanically-molded stoneware with a white glaze

# Basic Detail Report

Description Light grey stoneware jug with a cylindrical rim, conical shoulder, cylindrical body, and recessed bottom. An applied handle connects the rim with the shoulder of the jug. The jug is glazed on the interior and exterior with a white glaze, or Bristol-type glaze. The retailer's name is printed in blue on the side of the jug opposite the handle, "THE W. W. WALKER CO./ HARTFORD, CONN./ BOSTON BRANCH GROCERY". The surface of the jug is pitted with small, black indentations where the glaze covered the uneven surface of the stoneware. There is light crazing over all the surfaces of the jug.

Dimensions Primary Dimensions (height x diameter): 11 1/2 x 7 7/8in. (29.2 x 20cm)