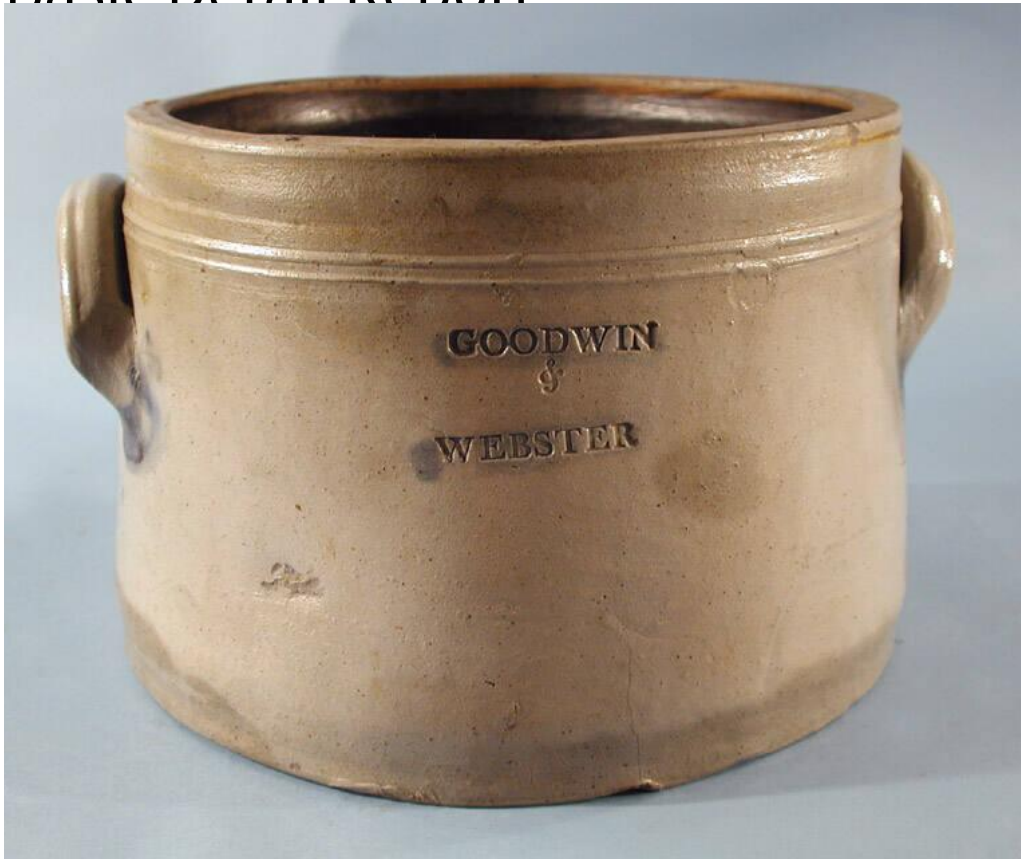


# Basic Detail Report



## Title Jar or Crock

Date 1810-1840

Primary Maker Goodwin & Webster

Medium Wheel-thrown stoneware with a salt glaze, brown slip glaze, and cobalt blue decoration

Description Short, cylindrical, wide-mouthed stoneware jar or crock with salt glaze on the exterior and brown slip glaze on the interior. Two raised lines circle the jar/crock about an inch below the plain, standing rim. There are two pulled lug handles located on opposite sides of the jar/crock, just below the raised lines. Between the handles, on one side, is a mark, "GOODWIN/ &/ WEBSTER". Cobalt blue has been applied over the mark and where the base of each handle meets the body of the jar/crock. There are numerous imperfections in the glaze

# Basic Detail Report

and surface of the jar/crock, as well as some darker grey discoloration circling

the base. There is a crack in the stoneware below the mark.

Dimensions Primary Dimensions (height x width including handle x depth): 7 1/2

x 12 1/4 x 10 7/8in. (19.1 x 31.1 x 27.6cm)