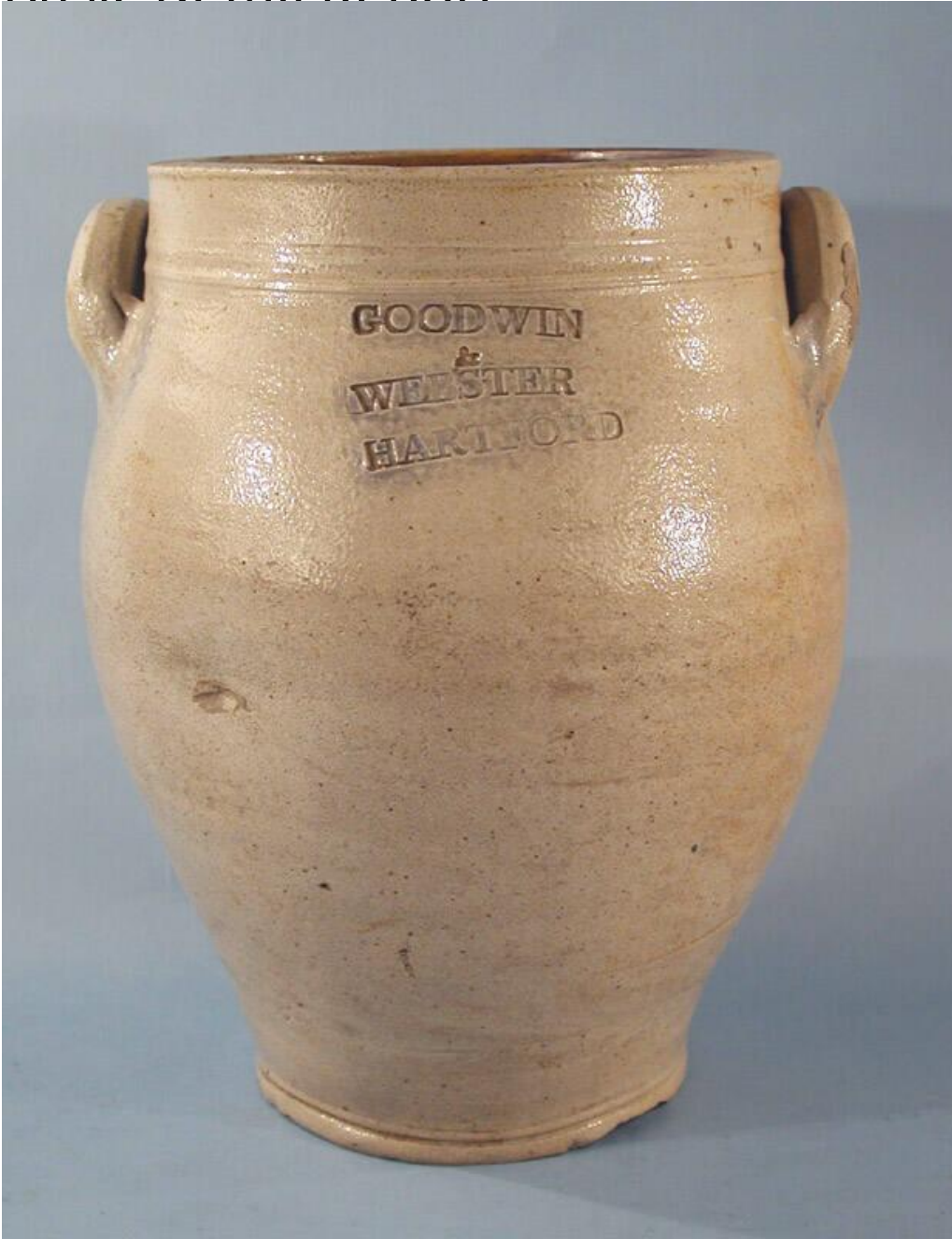


Basic Detail Report



Title Jar

Date 1810-1840

Primary Maker Goodwin & Webster

Medium Wheel-thrown stoneware with a salt glaze, brown slip glaze, and cobalt blue decoration

Basic Detail Report

Description Ovoid, wide-mouthed, grey stoneware jar with a salt glaze on the exterior and brown slip glaze, or Albany-type glaze, on the interior. The jar has a flat base and sides that gently swell, then narrow again, to form a plain, standing rim. A pair of incised lines and one raised line circle the jar just beneath the rim. Two pulled lug handles are located over this band, one on each side of the jar. A mark is impressed on one side of the jar between the handles. The mark is, "GOODWIN/ &/ WEBSTER/ HARTFORD". Cobalt blue has been applied over the mark and at the base of each of the handles. There is a light crazing over all the exterior glazed surfaces of the jar, and the salt glaze is a light brown on the side of the jar opposite the mark. There are two medium-sized imperfections in the glaze, one to the lower left of the mark, and one on the opposite side.

Dimensions Primary Dimensions (height x diameter): 11 5/16 x 9 1/16in. (28.7 x 23cm)