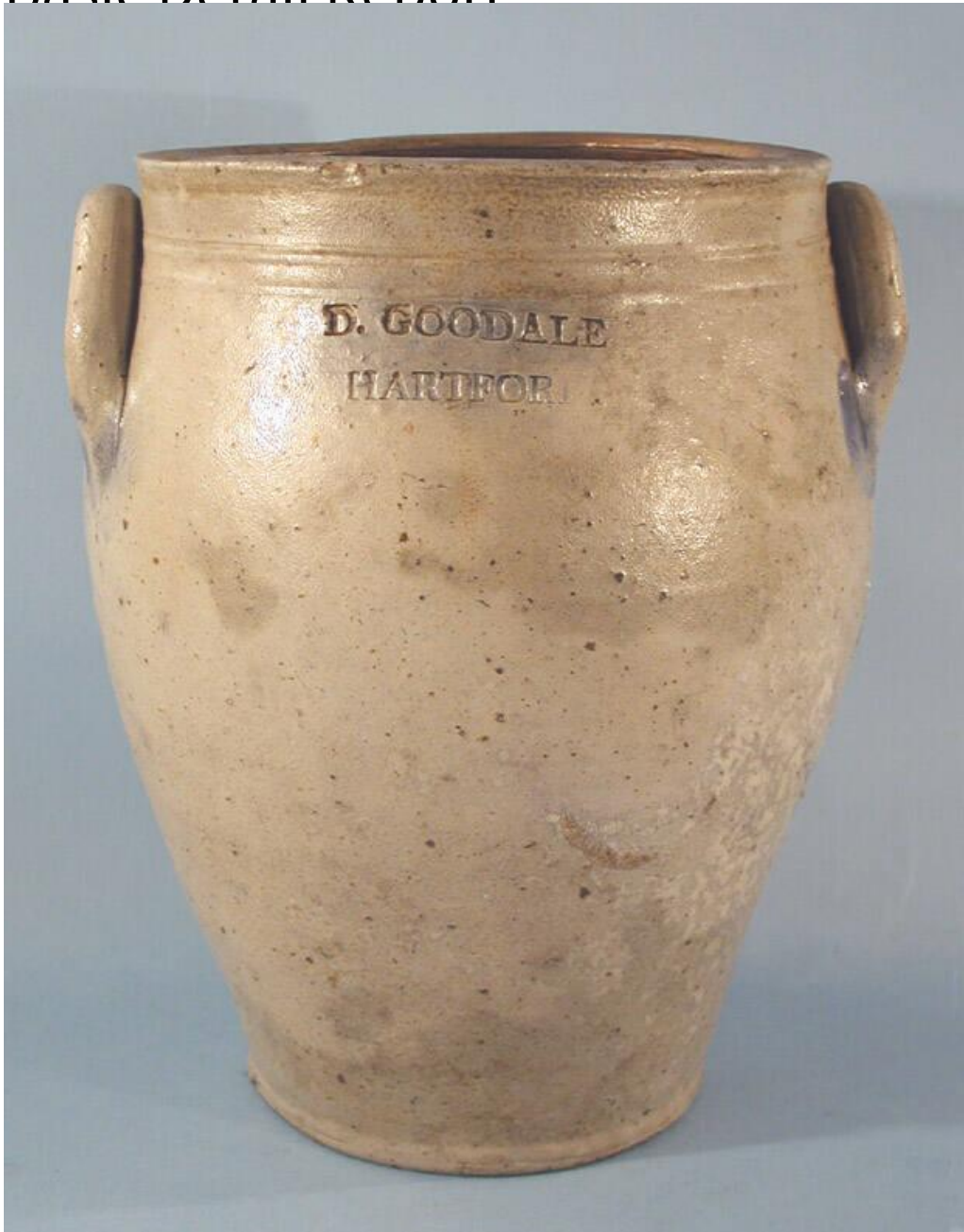


Basic Detail Report



Title Jar

Date 1825-1830

Primary Maker Daniel Goodale Jr.

Medium Wheel-thrown salt-glaze stoneware with cobalt blue decoration

Description Wide-mouthed, ovoid, grey stoneware jar with a salt glaze on the exterior and a brown slip glaze, or Albany-type glaze, on the interior. The jar has

Basic Detail Report

a round, flat bottom, and sides that gradually widen, then narrow, to form a

plain, standing rim. There are two raised lines circling the jar just below the rim.

The jar has two pulled lug handles. The handles are pressed against the jar along

their full length, attaching completely to the side of the jar just below the neck. A

maker's mark, "D. GOODALE/ HARTFORD", is stamped once on one side of the

jar, between the handles. Cobalt blue has been applied at the base of each of the

handles and over the maker's mark. The exterior glaze has many imperfections

and has acquired dirt over time. An unknown sticky substance is adhered to the

exterior and interior of the jar. There is a hairline crack in the jar, starting at the

base and running several inches up the side.

Dimensions Primary Dimensions (height x width including handles x depth): 11 1

/2 x 9 x 7 3/4in. (29.2 x 22.9 x 19.7cm)