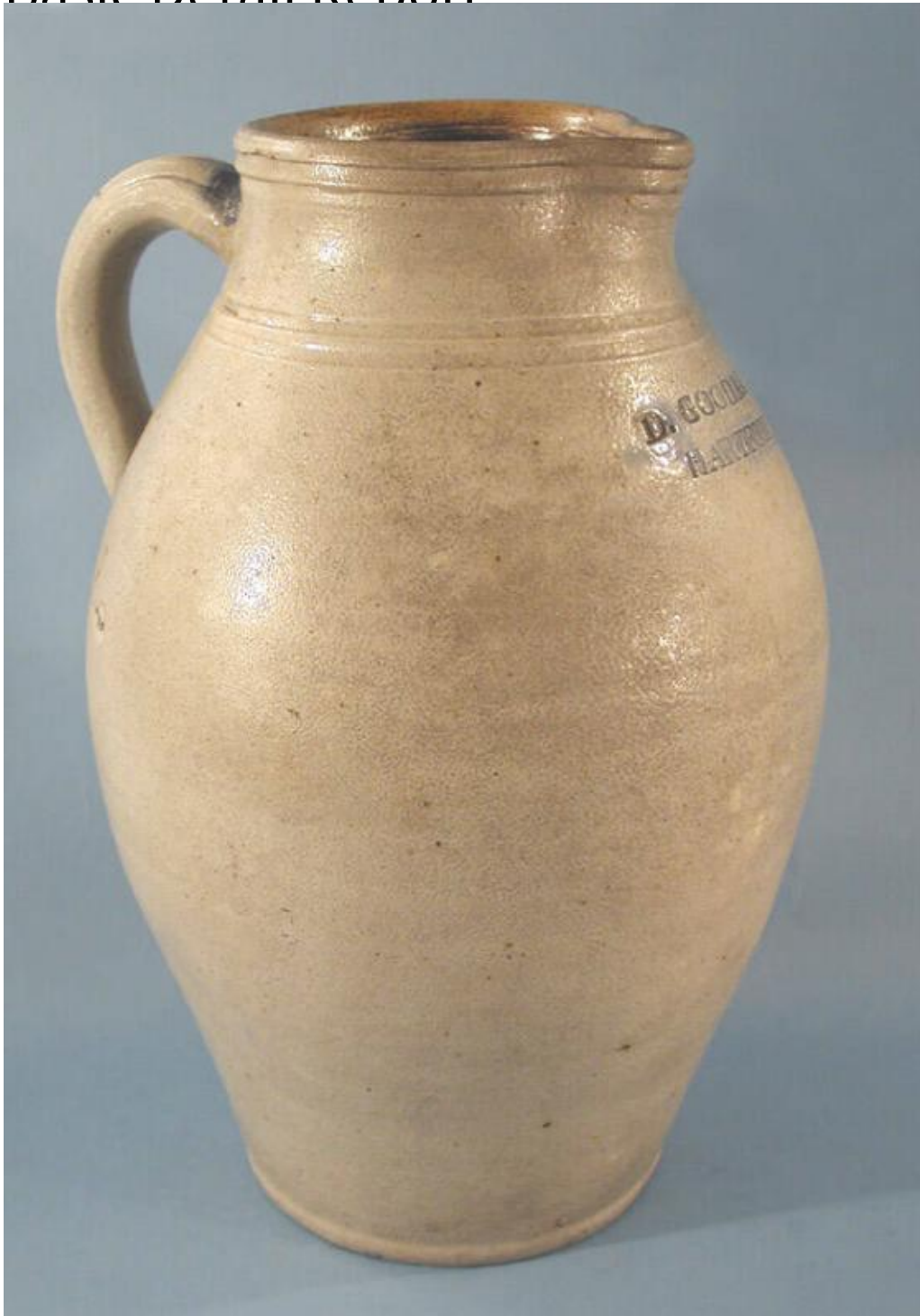


# Basic Detail Report



## Title Pitcher

Date 1825-1830

Primary Maker Daniel Goodale Jr.

Medium Wheel-thrown salt-glaze stoneware with cobalt blue decoration

# Basic Detail Report

Description Ovoid, grey, stoneware pitcher with a salt glaze on the exterior and a

brown slip glaze, or Albany-type slip glaze, on the interior. The pitcher has a flat

foot and gently swelled sides that narrow gradually at the shoulder to form a

plain vertical rim. There are two incised bands at the neck and two raised bands

circling the rim. The spout on the pitcher is formed by a fold in the rim; a pulled

strap handle is applied opposite the spout, connecting the neck and shoulder.

Opposite the handle, below the spout, is an impressed maker's mark, "D.

GOODALE./ HARTFORD". Cobalt blue has been applied at both ends of the

handle and over the mark. There are imperfections in the glaze to the right of

the mark and beneath and to either side of the handle. A crack runs from the

foot of the pitcher up the side, to the lower left of the handle.

Dimensions Primary Dimensions (height x width including handle x depth): 13 x

8 x 4 3/4in. (33 x 20.3 x 12.1cm)