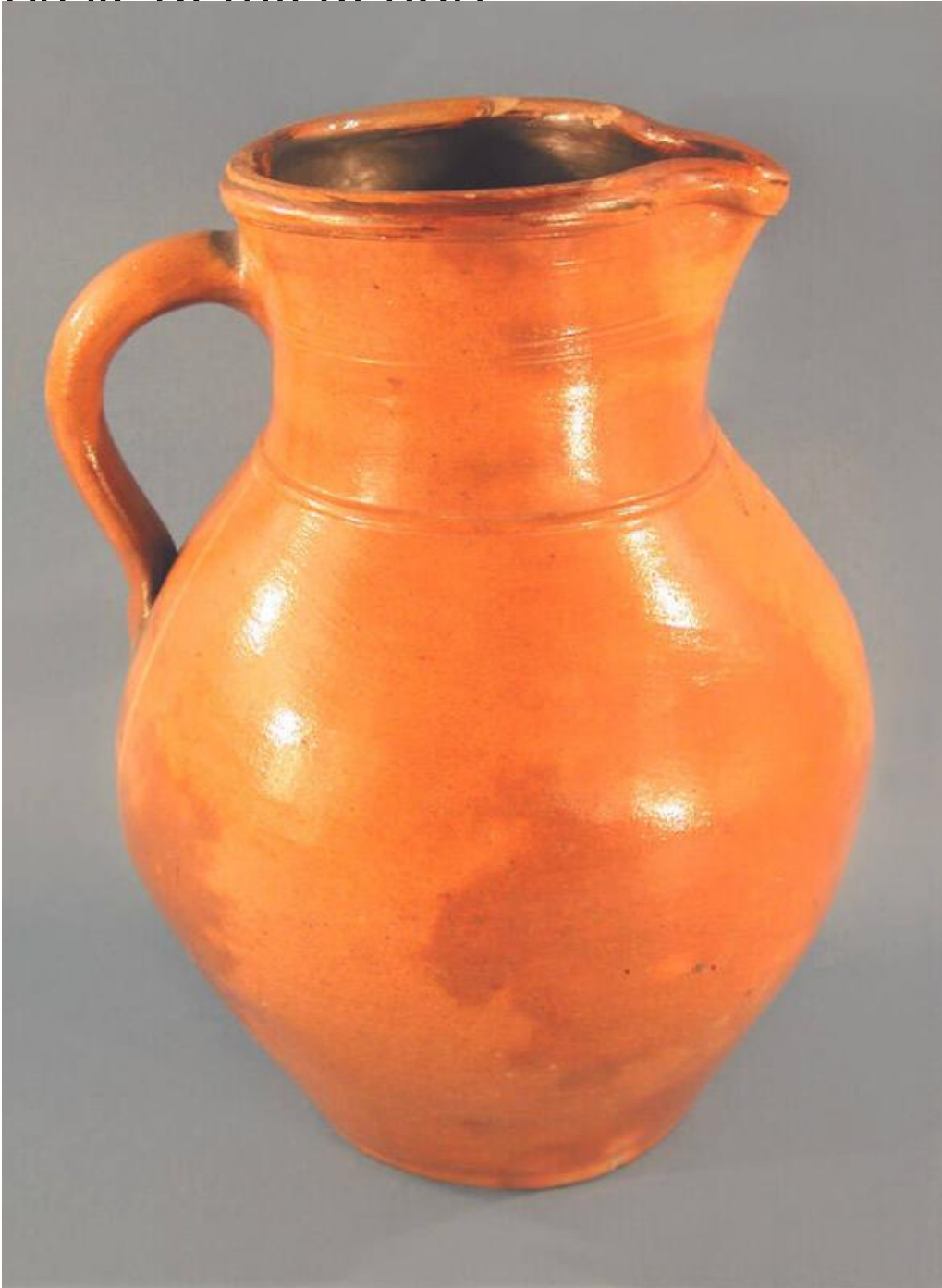


# Basic Detail Report



## Title Pitcher

Date 1839-1857

Primary Maker M. C. Webster & Son

Medium Wheel-thrown stoneware with a salt glaze, brown slip glaze, and cobalt blue decoration

# Basic Detail Report

Description Ovoid, two gallon stoneware pitcher with a light brown salt glaze on

the exterior and a brown slip glaze, or Albany-type glaze, on the interior. The

pitcher sits on a flat foot and has sides that swell then narrow at the shoulder

and neck before forming a slightly flared, rolled rim. A raised band circles the

base of the neck, and there are two incised lines about two inches below the rim.

One side of the rim has been pulled forward to form a spout. Opposite this, a

pulled strap handle connects the neck and middle of the jug. Opposite the

handle, and below the spout and raised band, is an impressed mark, "M.C.

WEBSTER&SON/ HARTFORD/ 2". Cobalt blue has been applied sparingly to the

mark, with more applied at each end of the handle. A small mount of cobalt blue

is also found in two drips on the front and side of the spout. The lower sides of

the pitcher are a darker brown than the upper portions, probably the result of

the firing process. There is an imperfection in the surface of the pitcher and

glaze to the lower right of the mark. There is a crack in the side of the pitcher to

the left of the handle, and a chip is missing from the surface of the stoneware to

the lower left of the handle. There are two small chips in the foot, three small

chips in the rim, and an exposed area of stoneware on the inside surface of the

neck.

Dimensions Primary Dimensions (height x width including handle x depth): 13 3

/4 x 9 x 6in. (34.9 x 22.9 x 15.2cm)