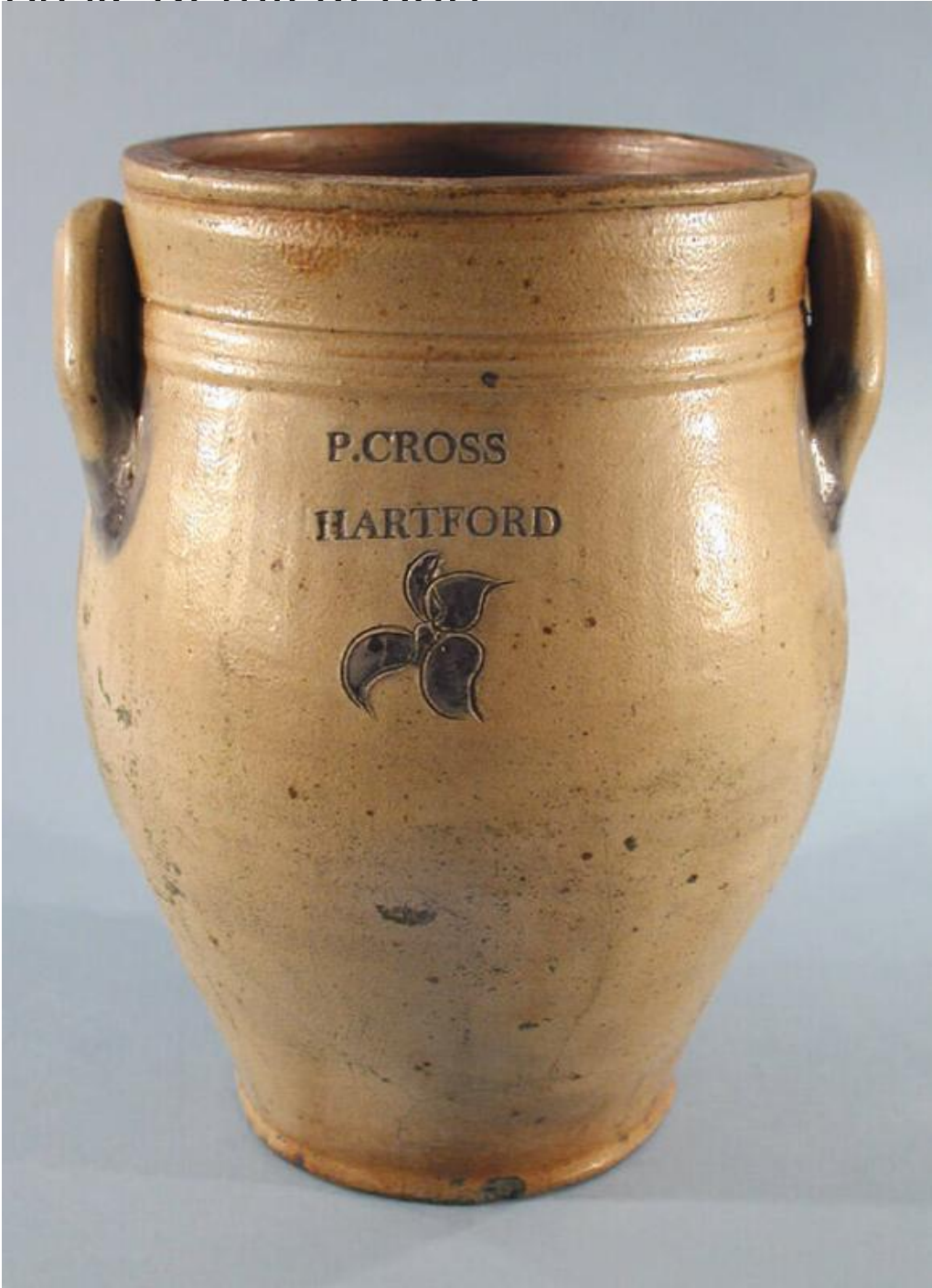


Basic Detail Report



Title Jar

Date about 1810

Primary Maker Peter Cross

Medium Wheel-thrown stoneware with a salt glaze and cobalt blue decoration

Basic Detail Report

Description Round, wide-mouthed, yellow/grey stoneware jar with a salt glaze

on the exterior and a brown glaze on the interior. The jar is decorated with hand-painted cobalt blue as well as incised lines. The jar has two pulled lug handles.

The handles are pressed against the jar along their full length, attaching completely to the side of the jar just below the neck. The base of each end of each handle is decorated with hand-painted cobalt blue. A band of incised lines circle the neck of the jar. The same maker's mark, "P.CROSS/ HARTFORD", is stamped twice on opposite sides of the jar, between the handles. On one side, beneath the mark, is an incised flower with four petals. The petals and center are filled in with cobalt blue. On the opposite side of the jar, below the mark, incised lines create a horizontal, decorative bracket with a scalloped edge. This is also filled in with cobalt blue. The glazed exterior surface of the jar has small indentations and bumps, as is expected on a stoneware object. Some of the indentations have accumulated dirt, and many spots of an unknown green substance are adhered to the different surfaces of the jar. There are a series of cracks in the surface of the jar, beneath one of the handles. Beneath the opposite handle is an area of a sticky substance, possibly the remnant of a sticker. It appears that a rectangular paper label was adhered to the side of the jar, to the left of the flower, at one time. There are two chips at the foot of the jar and two at the rim.

Dimensions Primary Dimensions (height x width including handles x depth): 12 3

/8 x 9 x 7 7/8in. (31.4 x 22.9 x 20cm)