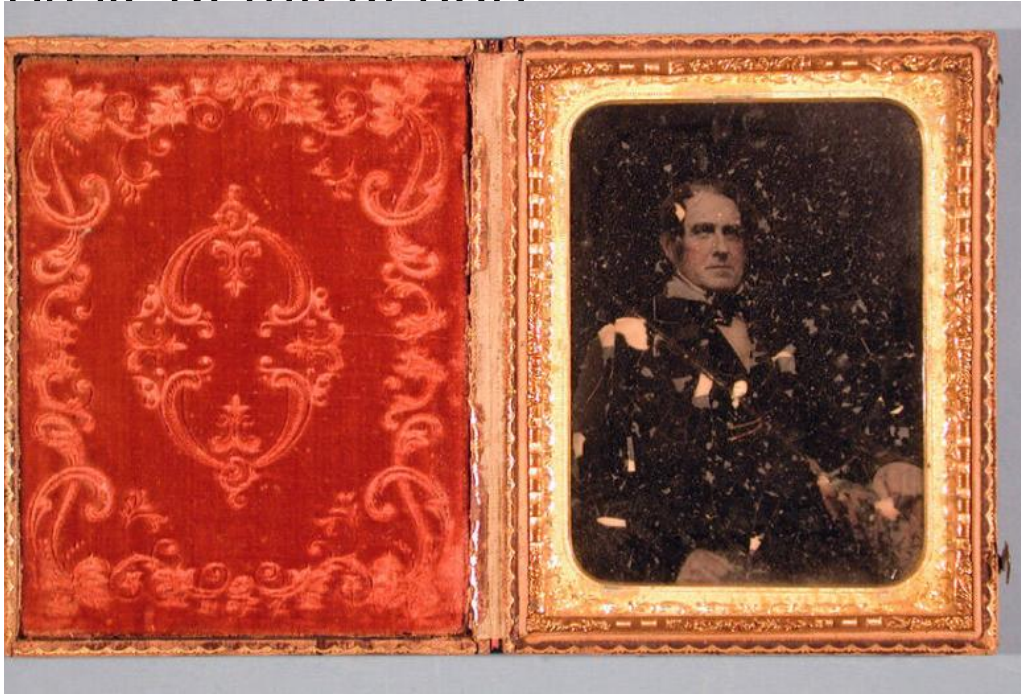


# Basic Detail Report



**Title** Henry Kirkland Sanger

**Date** 1855-1864

**Primary Maker** Unknown

**Medium** Photography; ambrotype and watercolor on glass, in leather-covered wooden case with embossed velvet pad, metal mat, and metal hook and eye closures

**Description** Half-length studio portrait of a seated man. The leather-covered case is embossed with a grape motif in an oval, including a bunch of grapes, vines, and leaves. A pattern of stylized leaves surrounds the oval. The outer borders of the case are printed with a gold scalloped border. The same design appears on the front and back of the case. The red velvet pad is embossed with a center pattern surrounded by flowers, leaves, and scrollwork. The double elliptical mat is embossed with a scrollwork border with a flower at each corner and a beaded inner edge.

# Basic Detail Report

Dimensions Primary Dimensions (image height x width): 4 5/8 x 3 3/8in. (11.7 x

8.6cm) Other (case height x width x depth): 6 x 4 3/4 x 7/8in. (15.2 x 12.1 x 2.2cm)