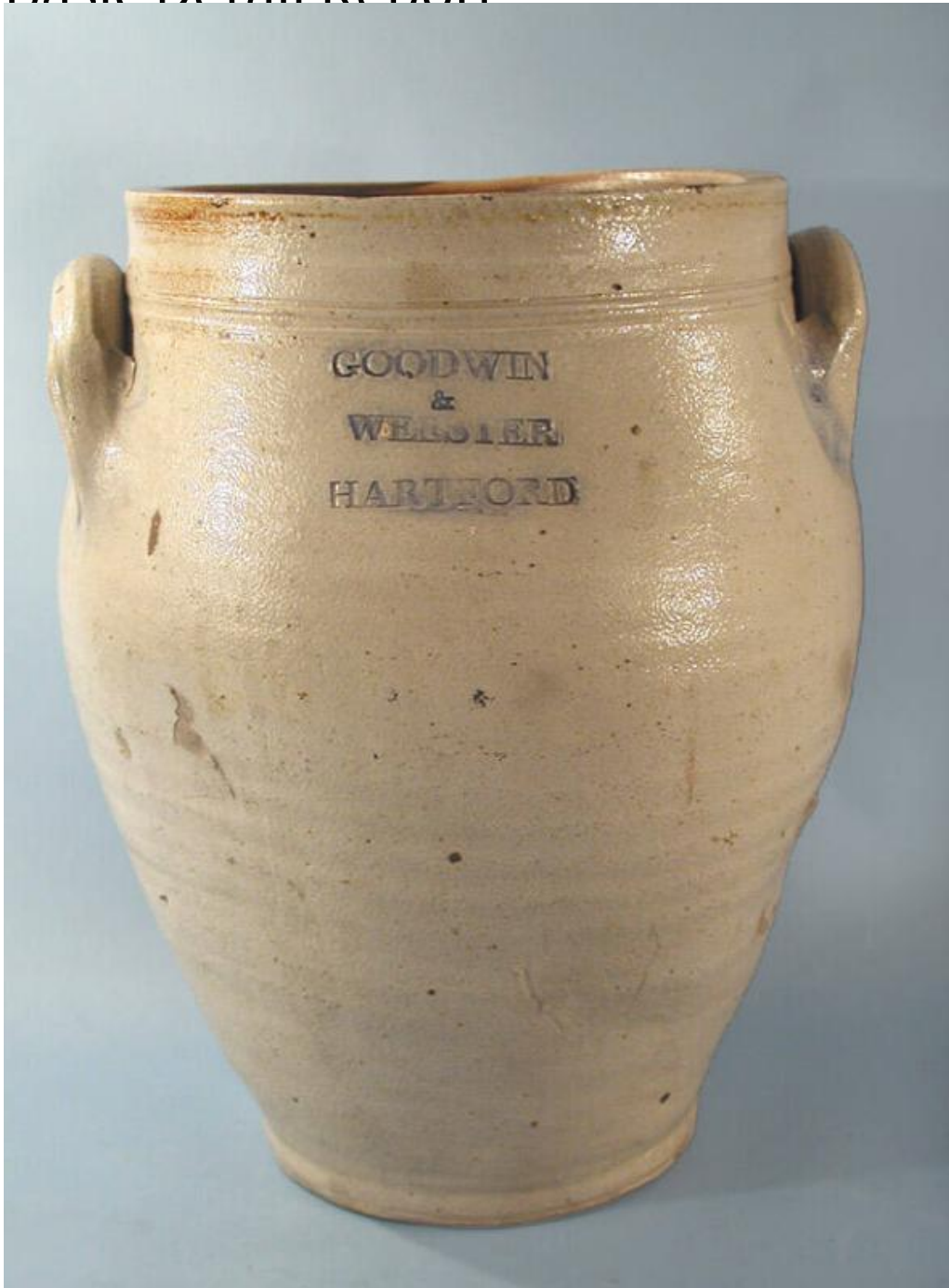


Basic Detail Report



Title Jar

Date 1810-1840

Primary Maker Goodwin & Webster

Medium Wheel-thrown stoneware with a salt glaze, brown slip glaze, and cobalt blue decoration

Basic Detail Report

Description Ovoid, wide-mouthed stoneware jar with a salt glaze on the exterior

and a brown slip glaze, or Albany-type glaze, on the interior. The jar has a flat base and sides that gently swell before narrowing at the neck to form a plain, standing rim. There are two incised lines about one inch below the rim. Two pulled lug handles have been applied over these lines on opposite sides of the jar. On one side, between the handles, is a mark, "GOODWIN/ &/ WEBSTER/ HARTFORD". Cobalt blue has been hand-painted over the mark and at the base of the handles. There are many imperfections in the glaze and the surface of the stoneware, including several areas at the rim where the thickly applied glaze is now yellow or light brown. There is crazing over all the exterior glazed surfaces of the jar. A chip of ceramic is gouged out of the interior side of the jar. Similarly, a chip of ceramic is missing from the exterior side of the jar, to the lower left of the mark.

Dimensions Primary Dimensions (height x diameter): 13 3/8 x 10 9/16in. (34 x 26.8 cm)