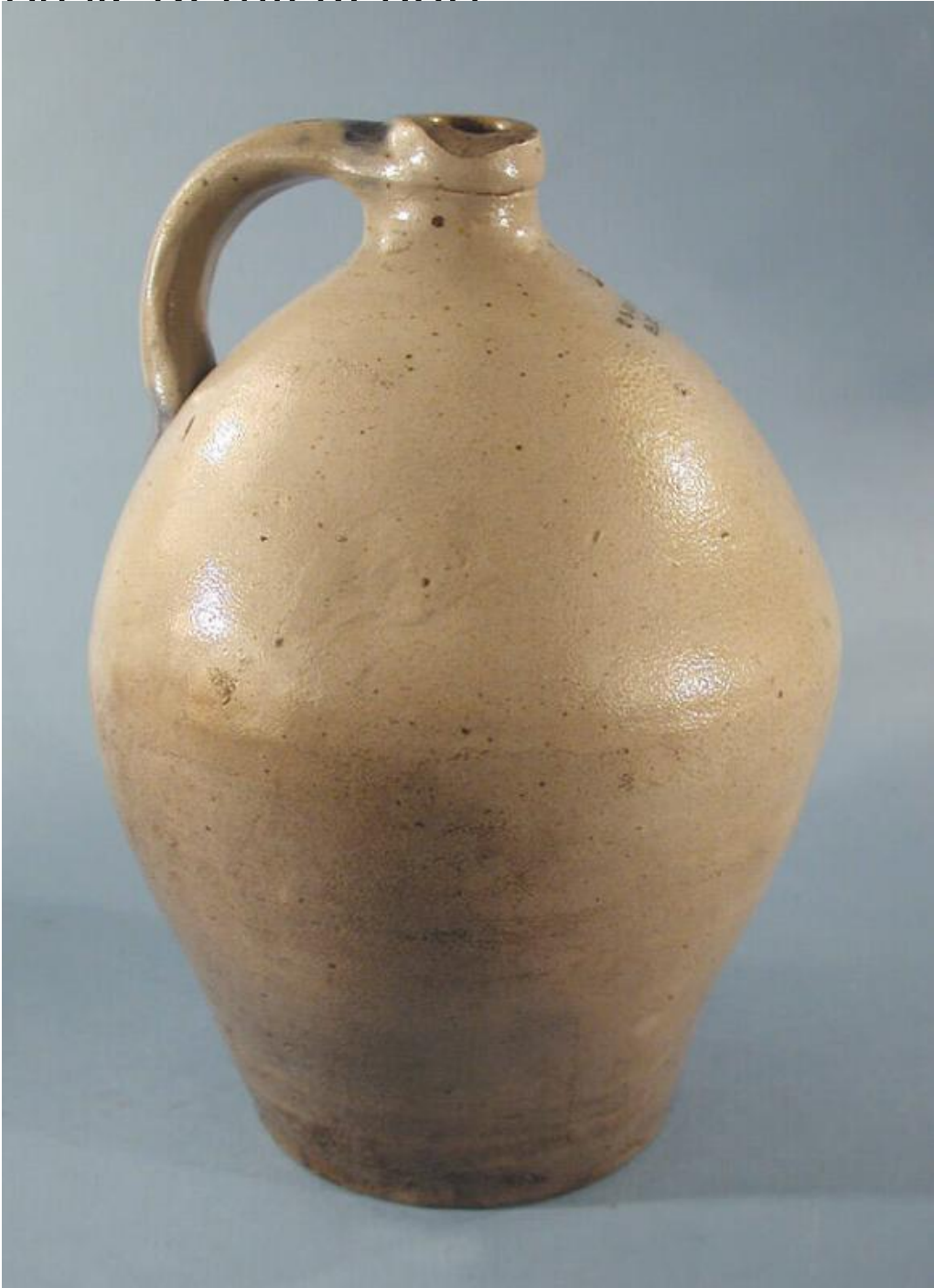


Basic Detail Report



Title Jug

Date early-mid 19th century

Primary Maker Thomas O'Hara Goodwin

Medium Wheel-thrown stoneware with a salt glaze, brown slip glaze, and cobalt blue decoration

Basic Detail Report

Description Grey, ovoid, stoneware jug with a salt glazed exterior and a brown

slip glaze, or Albany-type glaze, on the interior. The jug has a flat bottom and

gently swelled sides that narrow at the shoulder to form a narrow neck and wide

band, or collar, at the rim. A pulled strap handle has been applied to one side,

connecting the rim and shoulder. Opposite the handle is the impressed maker's

mark, "2/ T O GOODWIN/ HARTFORD". Cobalt blue has been applied to the ends

of the handle and the mark. The neck is tilted slightly to one side, and there are

imperfections in the glaze. There is a large chip in the rim.

Dimensions Primary Dimensions (height x diameter): 12 3/4 x 9 1/2in. (32.4 x 24.1

cm)