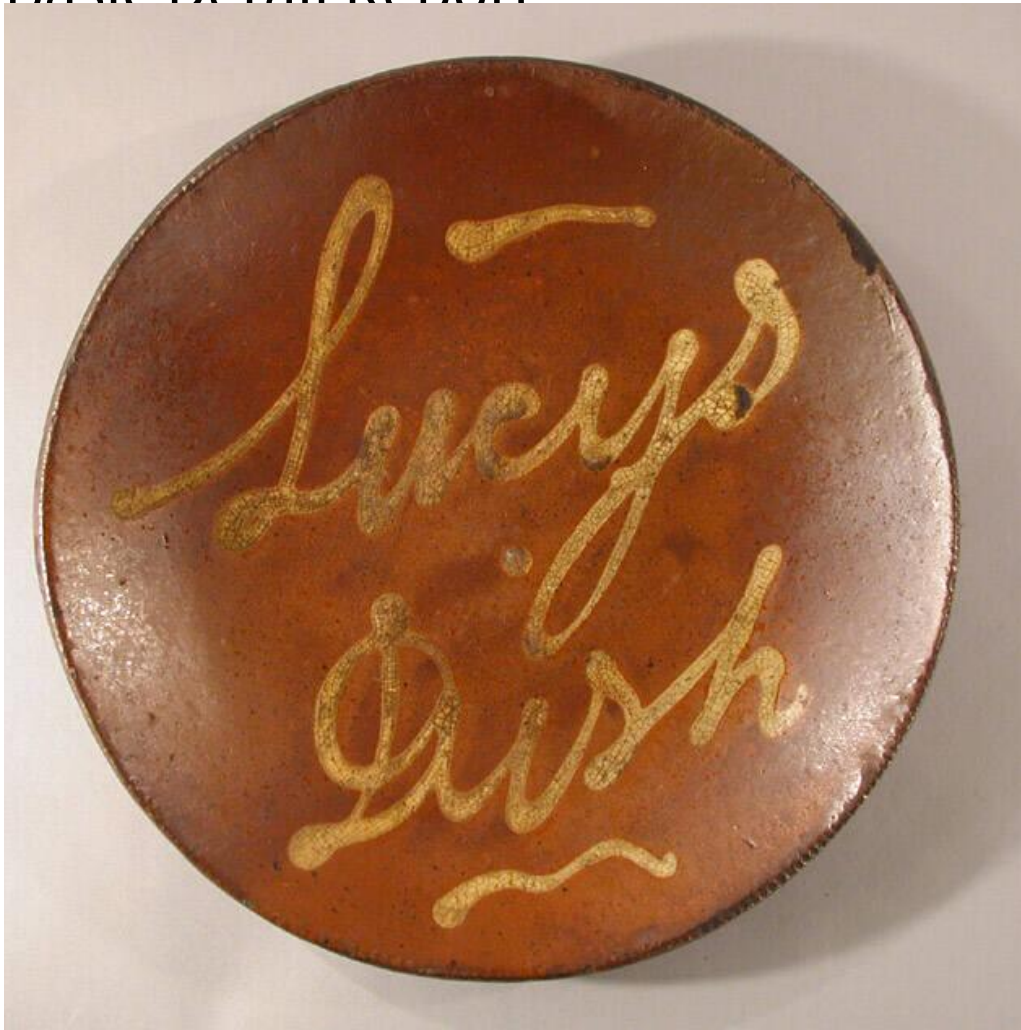


Basic Detail Report



Title Plate

Date about 1830-1850

Primary Maker Smith Pottery

Medium Drape-molded redware with slip decoration and a lead glaze

Description Round redware plate with slip decoration beneath a lead glaze. The plate was formed by trailing white slip over the clay to form two lines that are above and below the words, "Lucys/ Dish". Then, the clay was draped over a rounded mold to give it its shape, before tooling the edge with a roulette wheel. The top surface of the plate is glazed, which gives the white slip a yellow appearance; the bottom is left unglazed. There is fairly even wear and crazing to

Basic Detail Report

the glaze all over the plate. One area of the slip, at the base of the 's' in "Lucys", has flaked off, and dirt has accumulated on the redware below. There are two chips in the rim, and the bottom of the plate has darkened considerably.

Dimensions Primary Dimensions (diameter): 10 1/8in. (25.7cm)