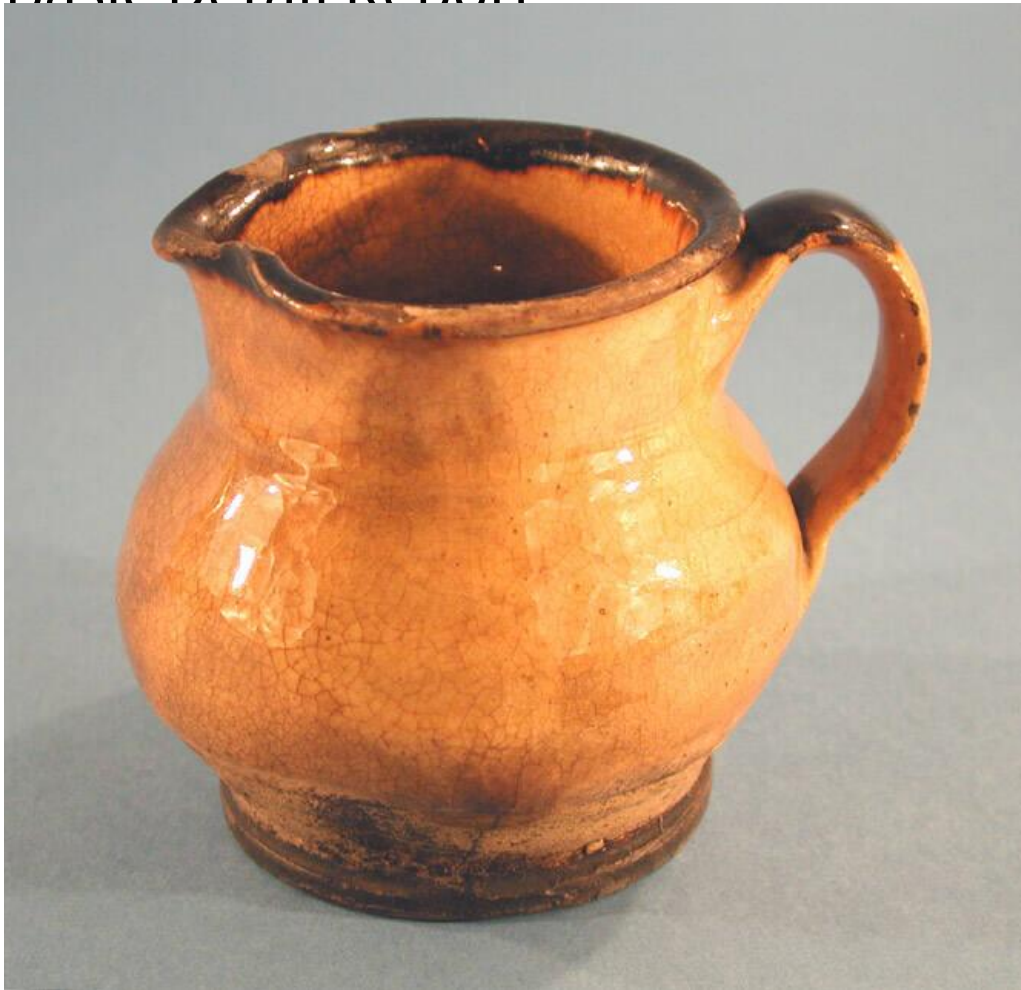


Basic Detail Report



Title Pitcher

Date 1750-1800

Primary Maker Unknown

Medium Wheel-thrown yellow earthenware with a yellow glaze and brown slip decoration

Description Small, round, yellow earthenware pitcher with a yellow glaze. The pitcher has a flat base and sides that swell and then narrow to a short, cylindrical neck and a flared rim. To one side of the rim and neck, the ceramic has been pinched together to form a spout. Opposite the spout, a pulled strap handle connects the neck and widest point of the pitcher. The pitcher is glazed

Basic Detail Report

on the interior and much of the exterior, although the lower sides and bottom of the exterior of the pitcher are unglazed. The pitcher has a band of brown slip at the rim and on the top of the handle. There is crazing over all the glazed surfaces of the pitcher, and extensive discoloration along the lines of crazing on the interior. There are four chips in the glaze along the top of the rim. The bottom of the pitcher is discolored to a dark brown or black.

Dimensions Primary Dimensions (height x width including handle x depth): 3 1/2 x 4 1/8 x 3in. (8.9 x 10.5 x 7.6cm)