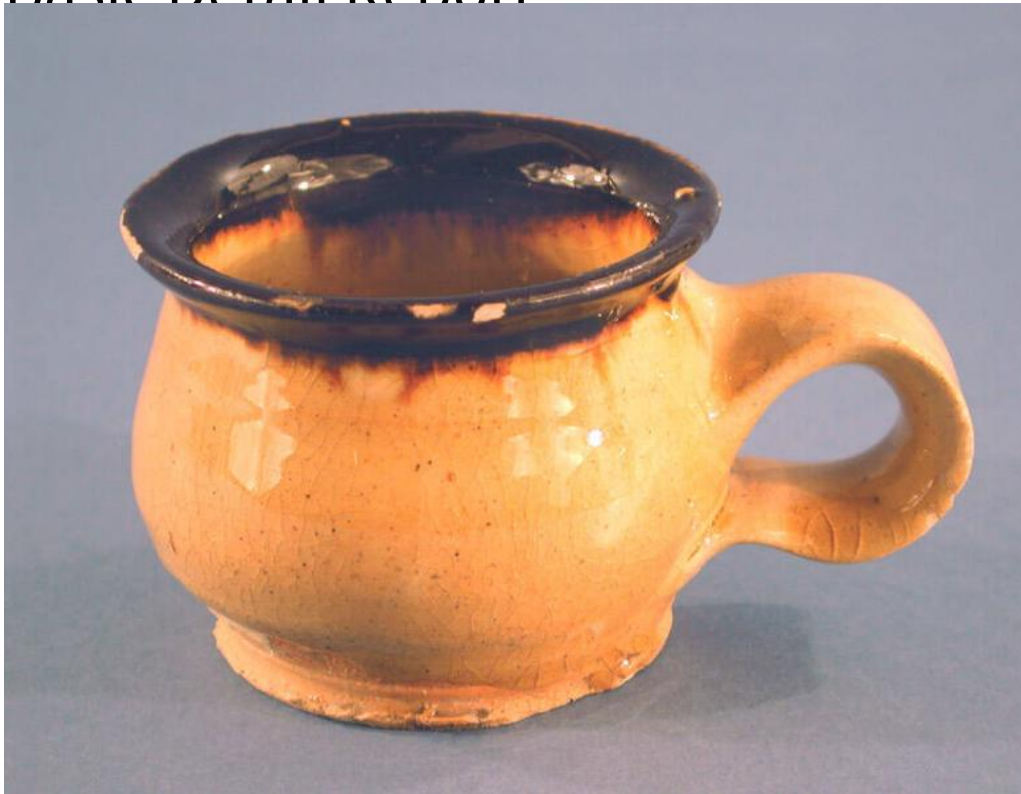


# Basic Detail Report



## Title Cup

Date 1780-1810

Primary Maker Unknown

Medium Wheel-thrown yellow earthenware with a yellow glaze and brown slip decoration

Description Small, round, yellow earthenware cup with a yellow glaze. The cup has a flat, round foot and sides that swell, then narrow, then flare to form a plain rim. One pulled strap handle has been applied to one side of the cup. The yellow glaze covers the inside of the cup and much of the outside; the foot and lower portions of the exterior side of the cup are not glazed. Additionally, the cup has a thick band of brown slip circling the rim. There is crazing over all the glazed surfaces of the cup, and about a dozen chips in the brown glazed decoration at the rim.

# Basic Detail Report

Dimensions Primary Dimensions (height x width including handle x depth): 2 3/8

x 3 3/4 x 2 3/4in. (6 x 9.5 x 7cm)