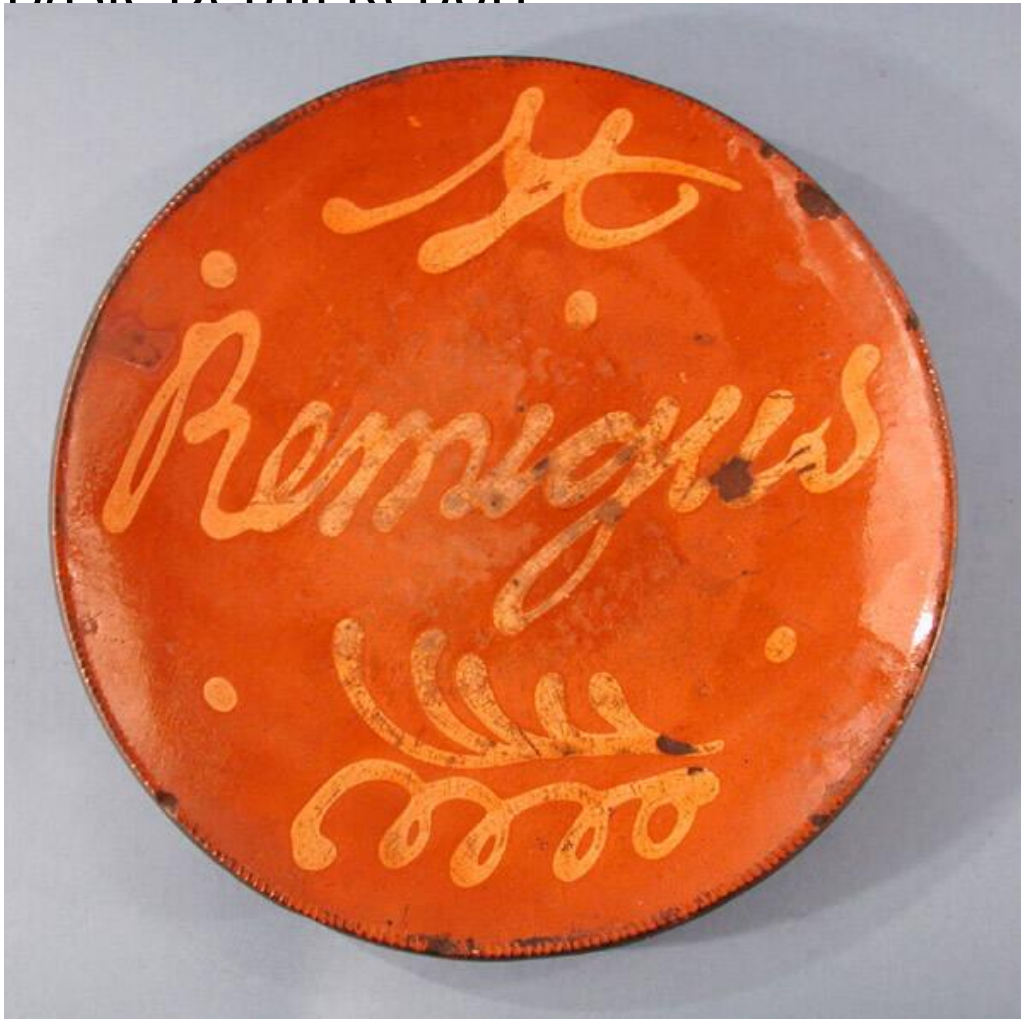


Basic Detail Report



Title Plate

Date about 1830-1850

Primary Maker Smith Pottery

Medium Drape-molded redware with slip decoration and a lead glaze

Description Round redware plate with slip decoration beneath a lead glaze. The plate was formed by trailing white slip over the clay to form the inscription "St. / Remigius" over an abstract leaf and curled line. Then, the clay was draped over a rounded mold to give it its shape, before tooling the edge with a roulette wheel. The top surface of the plate is glazed, which gives the white slip a yellow appearance; the bottom is left unglazed. The plate shows wear, especially to the

Basic Detail Report

glaze in the center. The glaze has worn away on some areas in the center and

has crazed in all other areas of the plate. Several areas of the slip decoration

have flaked away, and dirt has accumulated on the redware surface below.

Finally, there are seven small chips in the rim of the plate.

Dimensions Primary Dimensions (height x diameter): 1 1/2 x 11in. (3.8 x 27.9cm)