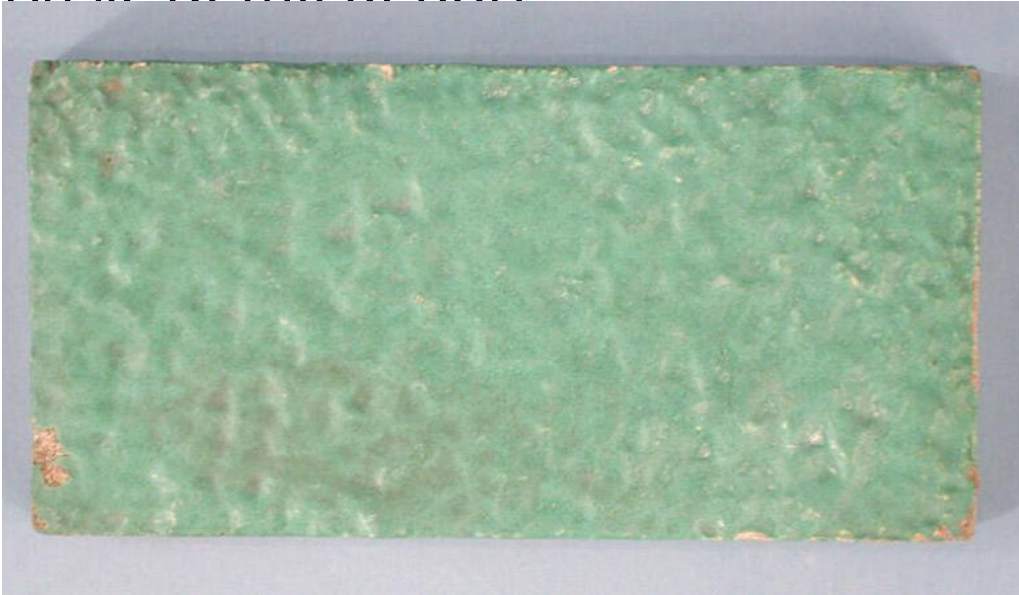


Basic Detail Report



Title Tiles

Date about 1900

Primary Maker The Hartford Faience Co.

Medium Press-molded earthenware with a green glaze

Description Group of four rectangular, earthenware tiles with an opaque green glaze applied to the top, textured surface. Some of the glaze has dripped down the sides and back of each tile, although ceramic is exposed on the sides and back of each tile. The back of each tile has an impressed rectangular area with the raised words, "THE HARTFORD FAIENCE CO./ HARTFORD, CONN." There are small chips on the corners and edges of all four tiles.

Dimensions Primary Dimensions (width x depth of each tile): 6 x 3in. (15.2 x 7.6 cm)