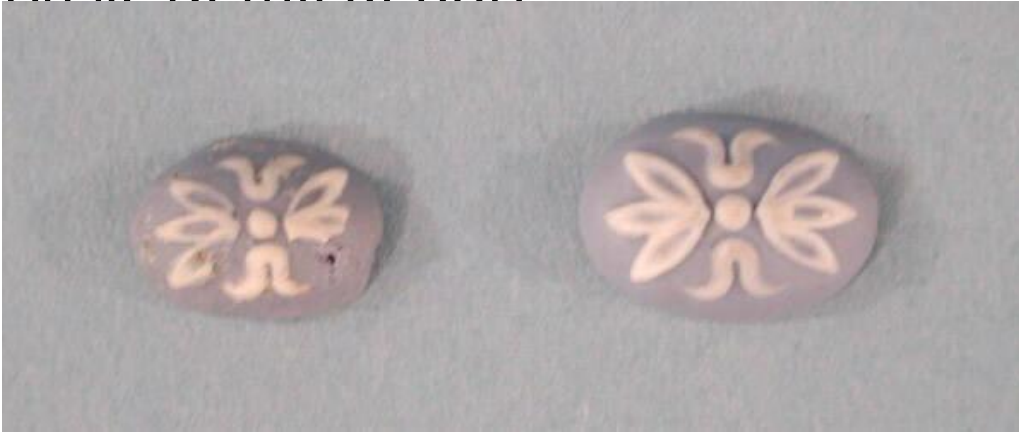


Basic Detail Report



Title Cameos

Date about 1910

Primary Maker The Hartford Faience Co.

Medium Cast blue and white porcelain

Description Group of five small, oval, porcelain cameos with white relief decoration on a domed blue background. The white raised decoration consists of a small circle surrounded by four groups of stylized floral embellishments. At either end of the oval are three petals, while the outline of a tulip is located on the shorter sides. Cameo .20 is smaller than the others, is not as well made, and has a few spots of an unknown substance adhered to the top.

Dimensions Component (width x depth of .20): 3/8 x 5/16in. (1 x 0.8cm)

Component (width x depth of .21-.24): 1/2 x 5/16in. (1.3 x 0.8cm)