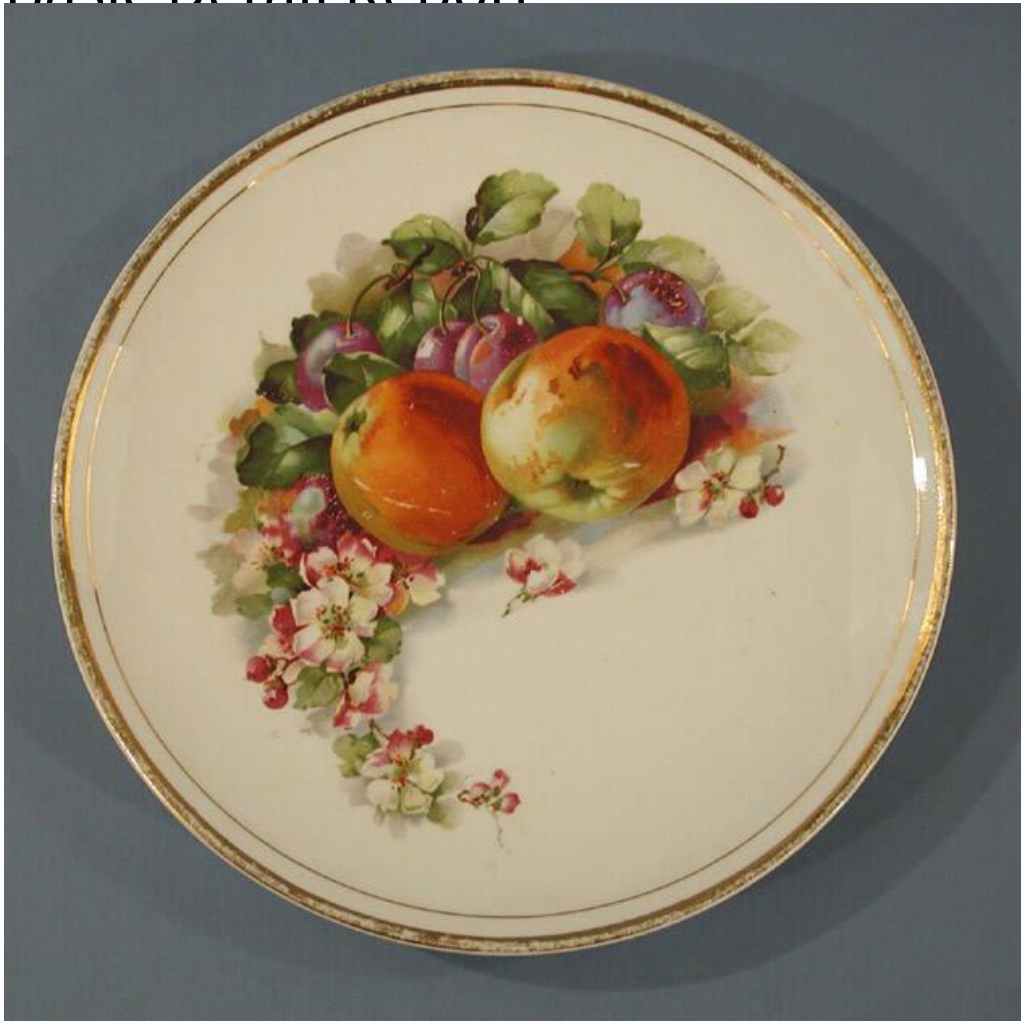


Basic Detail Report



Title Dessert Plate

Date about 1920-1940

Primary Maker W. S. George Pottery Company

Medium Mechanically-molded ironstone with gilding and overglaze enamels in orange, purple, green, black, and yellow

Description Round, white, ironstone dessert plate with a gilded rim and a printed multi-color enamel pattern. The pattern, printed off center on the plate, consists of two large pieces of fruit, perhaps apples or oranges, in various shades of purple, orange, and green, with four purple plums just behind. The fruit is surrounded by leaves behind and a sprinkling of small white flowers in

Basic Detail Report

the foreground. The flowers extend to the lower left and curve slightly around

the plate's surface. The whole pattern is surrounded by two bands of gilding at

the rim: a thick band at the outer edge of the rim with a thin band just inside.

There are three stilt marks on the bottom of the plate. There are light and heavy

scratches, consistent with use over time, over the top surface of the plate. The

wide band of gilding at the edge of the rim shows wear as well.

Dimensions Primary Dimensions (diameter): 8 3/8in. (21.3cm)