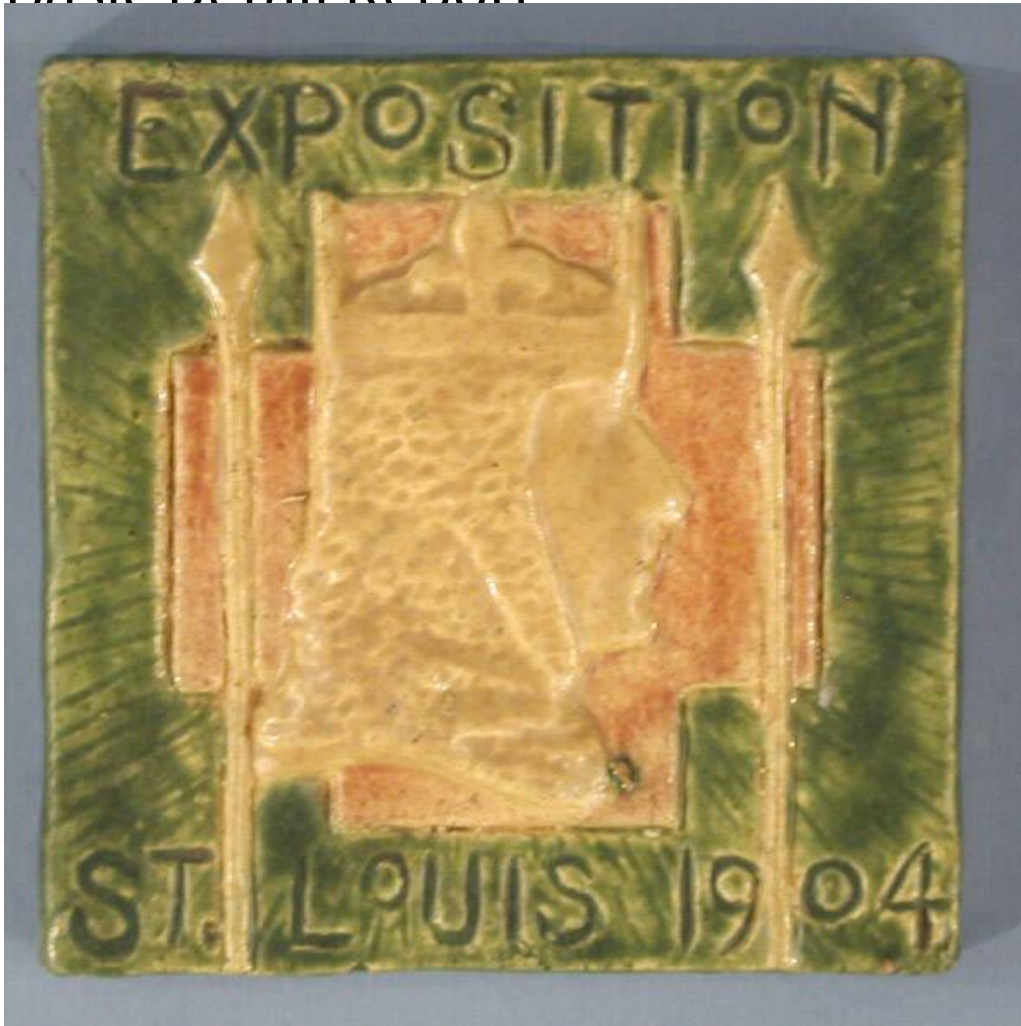


Basic Detail Report



Title Tile

Date about 1904

Primary Maker The Hartford Faience Co.

Medium Press-molded earthenware with green, yellow, and red glaze

Description Square, earthenware tile with opaque green, yellow, and red glazes.

The style of this tile reflects the Arts and Crafts and the pre-Raphaelite movements, popular in America in the late nineteenth and early twentieth centuries. In the center of the tile, the raised head of a medieval king is superimposed over a red cross. The king wears a crown with a fleur de lis on top. The king's head faces right, and there is a spear on either side of the head, also

Basic Detail Report

superimposed over the cross. Shallow impressed lines in the green background

of the tile give the impression of light emanating from the center of the tile.

Above the decoration is the impressed word "EXPOSITION", with the words "ST.

LOUIS 1904" below. The glazes cover the sides of the tile, but not the back,

where the cream-colored earthenware is visible. The back of the tile has an

impressed rectangular area with the raised words, "THE/ HARTFORD FAIENCE

CO./ HARTFORD, CONN." There are two small chips on the back edges of the tile,

and light crazing over all the glazed surfaces.

Dimensions Primary Dimensions (width x depth): 4 3/8 x 4 3/8in. (11.1 x 11.1cm)