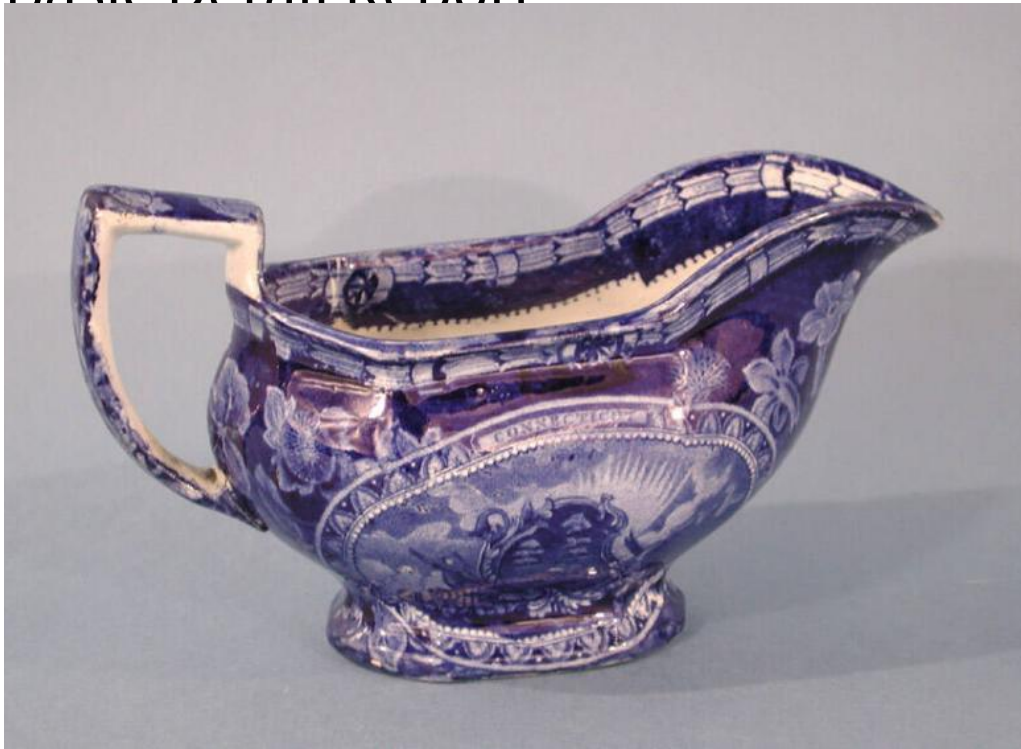


# Basic Detail Report



## Title Gravy Boat

Date 1826-1836

Primary Maker Thomas Mayer

Medium Mold-formed buff-colored earthenware with a blue-tinted glaze and underglaze cobalt blue decoration

Description Oval gravy boat of buff-colored earthenware with a blue-tinted glaze, a type of ceramic known as pearlware. The sides of the gravy boat swell from an oval foot to a rim, with a spout and handle at opposite ends. The gravy boat has a dark blue pattern, printed under the glaze, that shows the seal of the state of Connecticut. Printed on both sides, the pattern shows an oval lacy border containing the word "CONNECTICUT" above. Inside the border, an elaborate scrolled cartouche with three groups of clouds inside sits on a pile of ammunition and cannons. Clouds fill the sky above the seal inside the oval.

# Basic Detail Report

Outside the oval, the border consists of trumpet flowers and vines on a field of

dark blue. The molded and applied handle also has underglaze blue transfer-

printed flowers on a field of blue. The inside and outside edge of the rim is

decorated with a series of scalloped reeds interrupted periodically with circles

or wheels. There is crazing over all the surfaces of the gravy boat. A hairline

crack begins at the rim, two inches to the left of the handle and runs half way

down the side. This may have been repaired at one time, as this crack has a light

tan substance applied on the inside of the gravy boat. There is also a slight

yellowing around the crack near the outside rim.

Dimensions Primary Dimensions (height x width x depth): 4 1/8 x 7 1/4 x 3in.

(10.5 x 18.4 x 7.6cm)