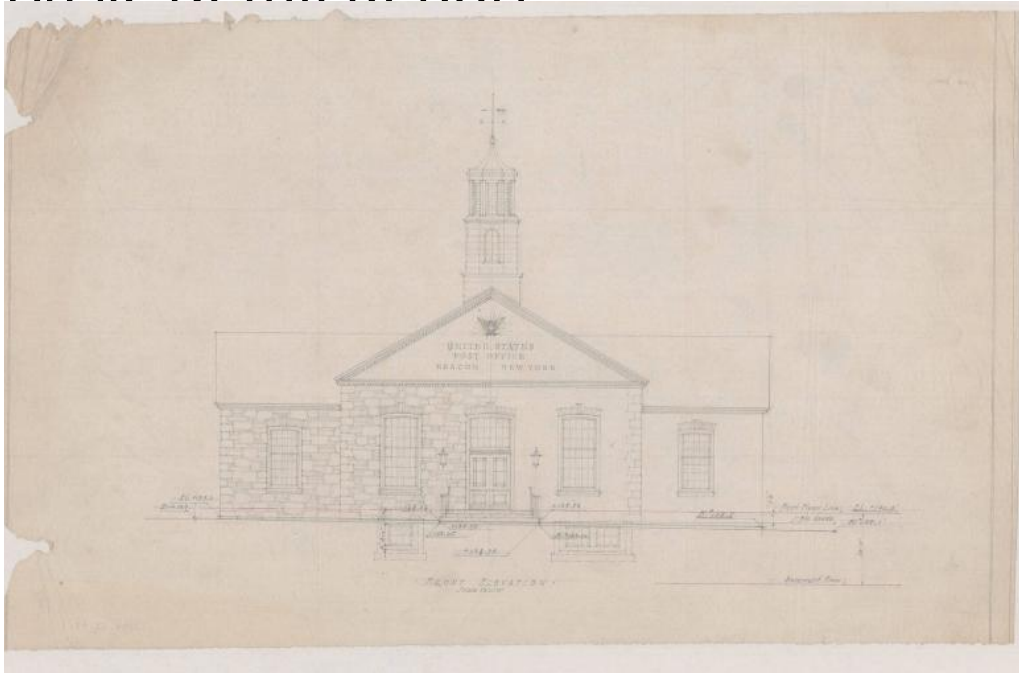


Basic Detail Report



Title United States Post Office, Beacon, New York

Date 1934

Primary Maker Charles Rosen

Medium Drawing; pencil on paper

Description Drawing includes elevation of front facade. The elevation shows a one story, five bay building with gabled roof and protruding intersecting gable. It features 24 over 20 double hung sash windows with round arched lintels and keystones. The entrance has two paneled doors with multipaned window and lintel. The building is made of stone construction with quoins on edges. Dentils and an inscription with an eagle decoration are featured on the pediment. There is a center cupola with an arched window, vents and a weathervane. Scale for drawing is 1/8" = 1'0".

Dimensions Sheet (height x width): 10 7/8 x 17 3/4in. (27.6 x 45.1cm)