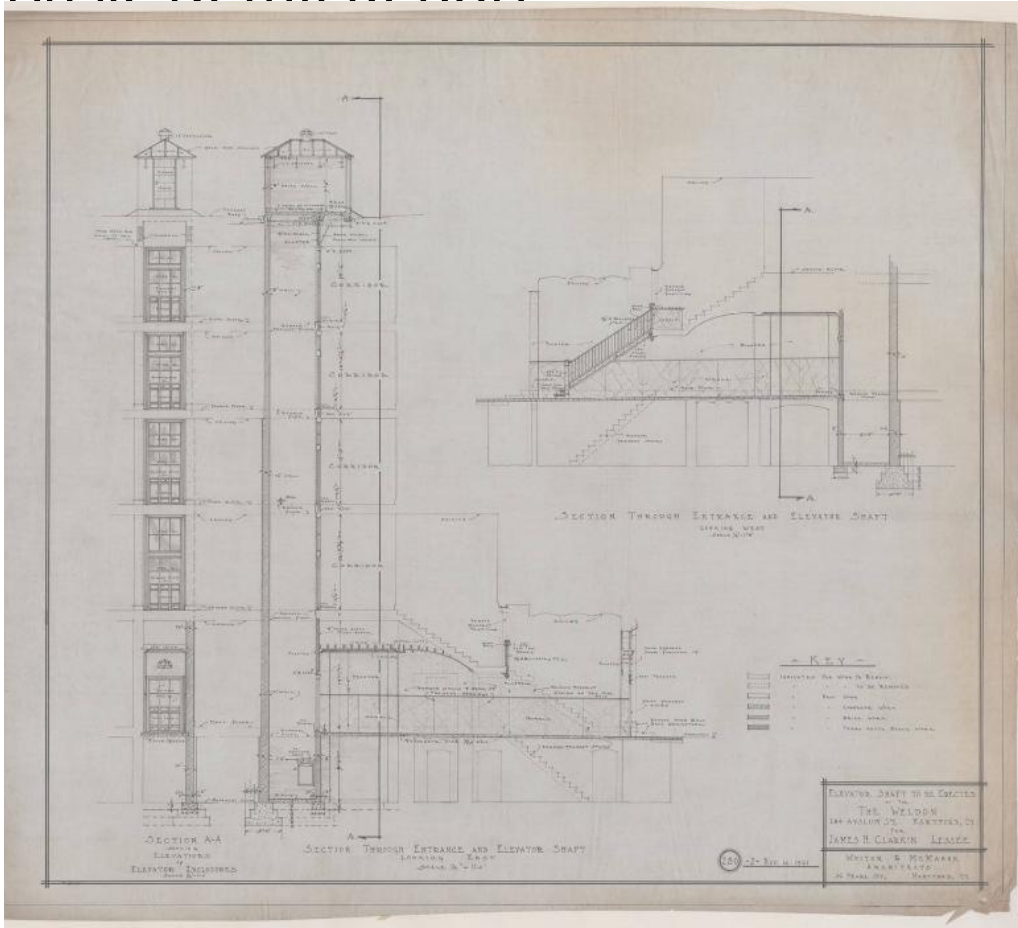


Basic Detail Report



Title Weldon Building Elevator Addition, Hartford

Date 1921

Primary Maker Whiton & McMahon

Medium Drawings; black ink on linen

Description Drawings include plans for basement, ground floor, second floor, third floor, fourth floor, fifth floor, penthouse and elevations for entrance door.

Also, sections of elevator enclosures and entrance / elevator shaft. Plans include brownstone, location, passage, elevator car, red quarry, elevator shaft, loft and light shaft. Elevations show a paneled door with new transom sash and sidelights covered by a segmented pediment, polished metal paneled elevator door with wire glazing and polished plate glass, as well as corbels, tinned doors

Basic Detail Report

and a ventilator. Sections of steel string stairs, plaster walls, marble landing, rowlock arch, brick wall and keys indicating objects that are old work to be remained / removed and new work. Scale for drawings is $1/4" = 1'0"$.

Dimensions Sheet (height x width): $29 \frac{5}{8} \times 33 \frac{5}{8}$ in. (75.2 x 85.4cm)