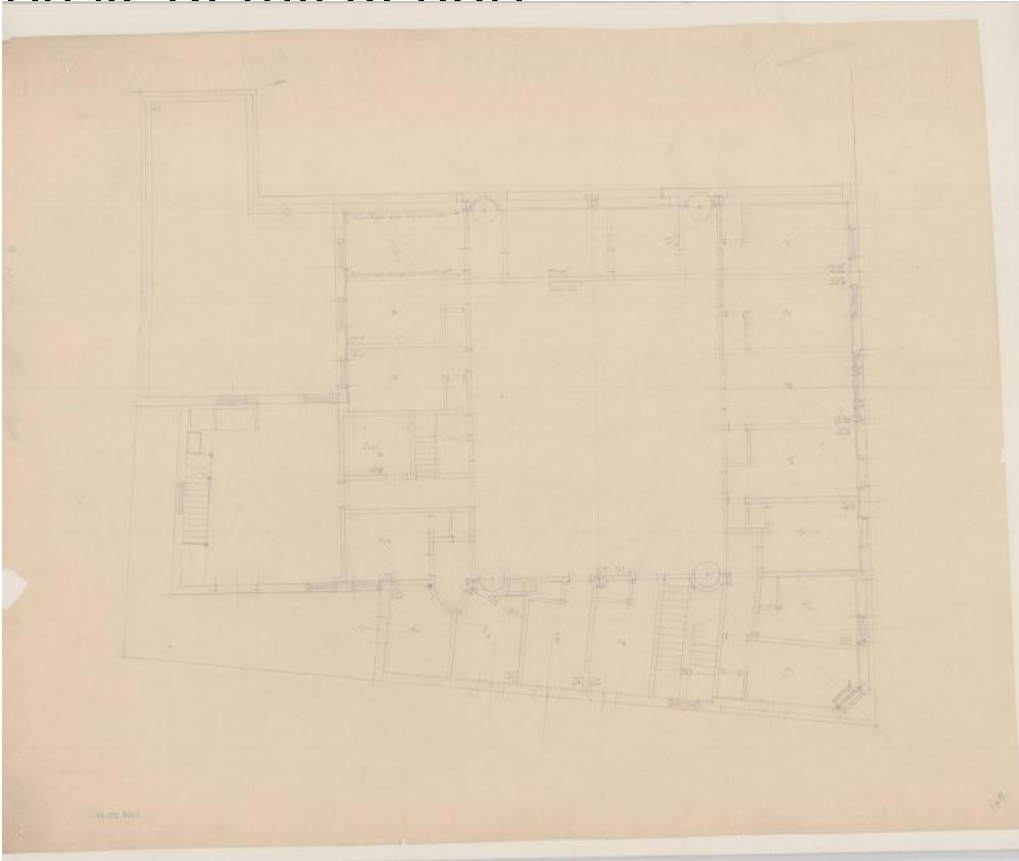


Basic Detail Report



Title City of Hartford Engine House #3

Date about 1912

Primary Maker Whiton & McMahon

Medium Blueprints; cyanotype on paper

Description Blueprints include plans for basement, first floor and second floor.

Plans include hose rack, hose trough, walker boiler, coal room, alcove, stall, harness and work room, trap door, apparatus room, captain's office, recreation room, coiler pipes, hay loft and main hall.

Dimensions Sheet (height x width): 18 5/8 x 25 3/4in. (47.3 x 65.4cm)