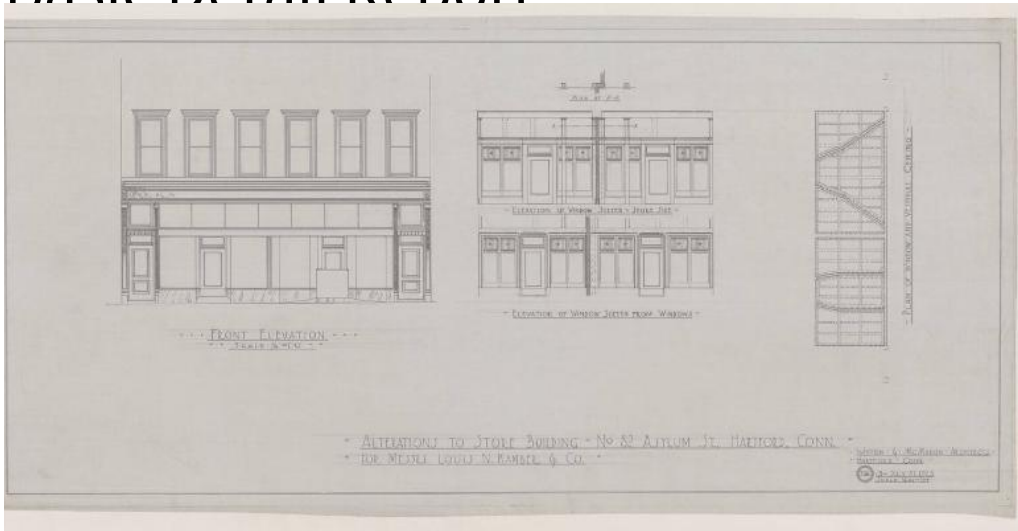


Basic Detail Report



Title Louis Kamber & Company

Date 1923

Primary Maker John J. McMahon

Medium Drawings; black ink on linen, pencil on tracing paper, paper on cardboard paper

Description Drawings include plans for window and vestibule ceiling, cellar, first floor, and elevations of front, window screen. Plans include boiler room, tile floor and mosaic tile floor. Elevations show three door store entranceway with plate glass storefront windows. The doors feature skylights and awnings. The second floor has six double hung sash windows.

Dimensions Sheet: 17 1/2 x 40in. (44.5 x 101.6cm)