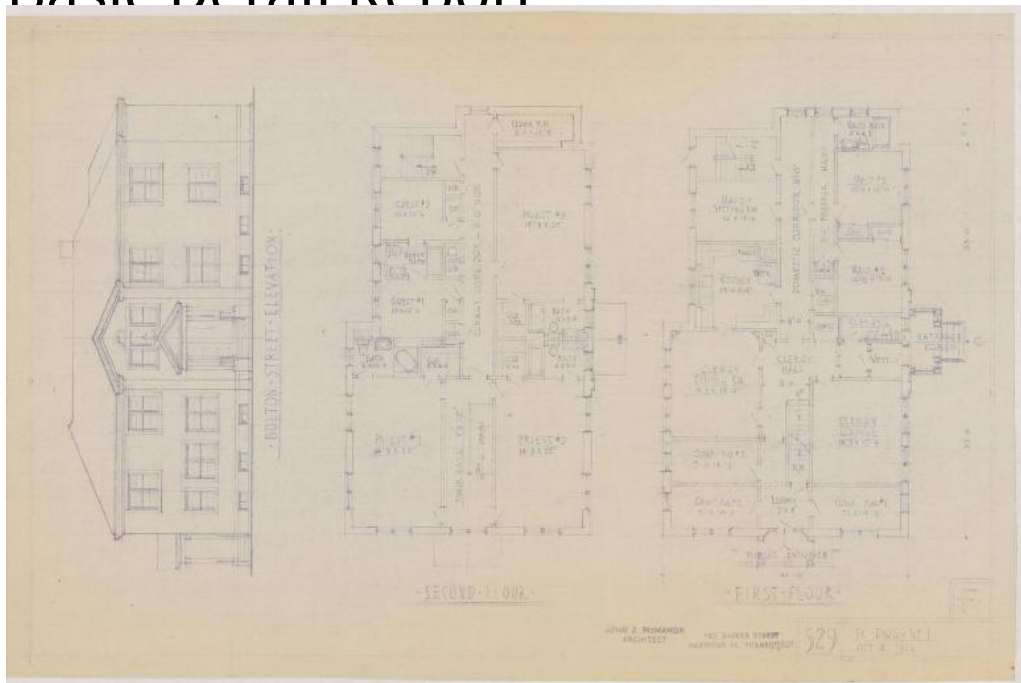


# Basic Detail Report



## Title St. Luke's Church Rectory, Hartford

Date 1955

Primary Maker John J. McMahon

Medium Blueprints; cyanotype on paper

Description Blueprints include plans for; plot, basement, first floor, second floor, footings, main roof, kitchen C; plumbing plans for basement, first floor, second floor, roof; electricity plans for basement, first floor, second floor; heating plans for basement, first floor, second floor; drainage plans for basement; and elevations of Bolton Street, front (south), side (east), side (west), rear (north).

Also, cross sections of A-A, B-B, C-C and detail of baseboard, vent, wall intake, air conditioning, sump pit and steel lintels. Plans include priest room, guest room, cedar room, clergy lounge, conference room, maid room, driveway, concrete walk, present church, proposed building, laundry, air condition machine room, basement storage space, finance room and compass. Elevations show five bay,

# Basic Detail Report

two story pressed brick house with hipped roof. Windows are paired, two-over-two double hung sash. Entrance has intersecting gable and a pediment portico with Doric columns and gray granite steps. The building features limestone lintels and sills and is six bays deep. Scale for drawings is  $1/32" = 1'0"$  and  $1/4" = 1'0"$ .

Dimensions Sheet (height x width):  $17 \frac{1}{8} \times 24 \frac{7}{8}$  in. (43.5 x 63.2cm)