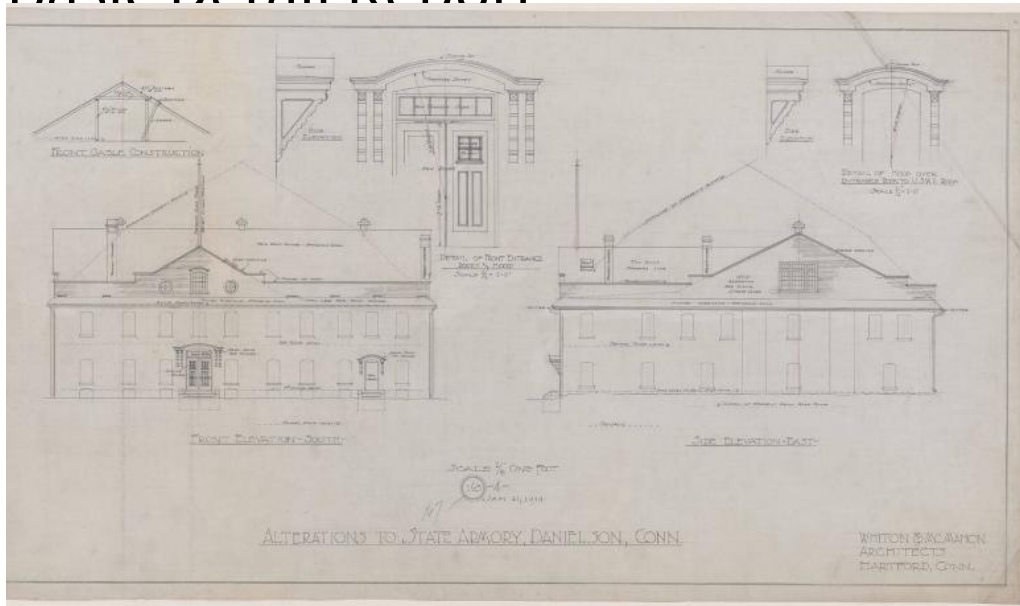


Basic Detail Report



Title State of Connecticut Armory, Danielson

Date 1915

Primary Maker Whiton & McMahon

Medium Drawings; black and red ink on linen

Description Drawings include plans for cellar, first floor, second floor, roof and elevations for front south, side east, side west and rear north. Also, sections of gable cornice, parapet cornice, truss, "B-B", "C-C" and showers. Also, detail of entrance door hood, front entrance door, front gable construction and front gable window frame. Plans include coal bin, boiler pit, present rifle range, cellar space, U.S.W.V., locker room, pool and card room, N.C.O. room, present gallery, CO. Q.M. sergeant's room, captains office, officer's room, truss and new store room. Elevations show ten bay, 2 1/2 story building with front gable entrance and two paneled doors with transom lights. A wood hood with tinned roof

Basic Detail Report

provides cover. Arched windows line the facade with flat pilasters. Also, details of sheathed soffet (sic) (soffit), new transom sash, glazed panels and head, box and sill. Scale for drawings is $1/8" = 1'0"$.

Dimensions Sheet (height x width): $18\frac{1}{4} \times 32\frac{1}{8}\text{in.}$ (46.4 x 81.6cm)