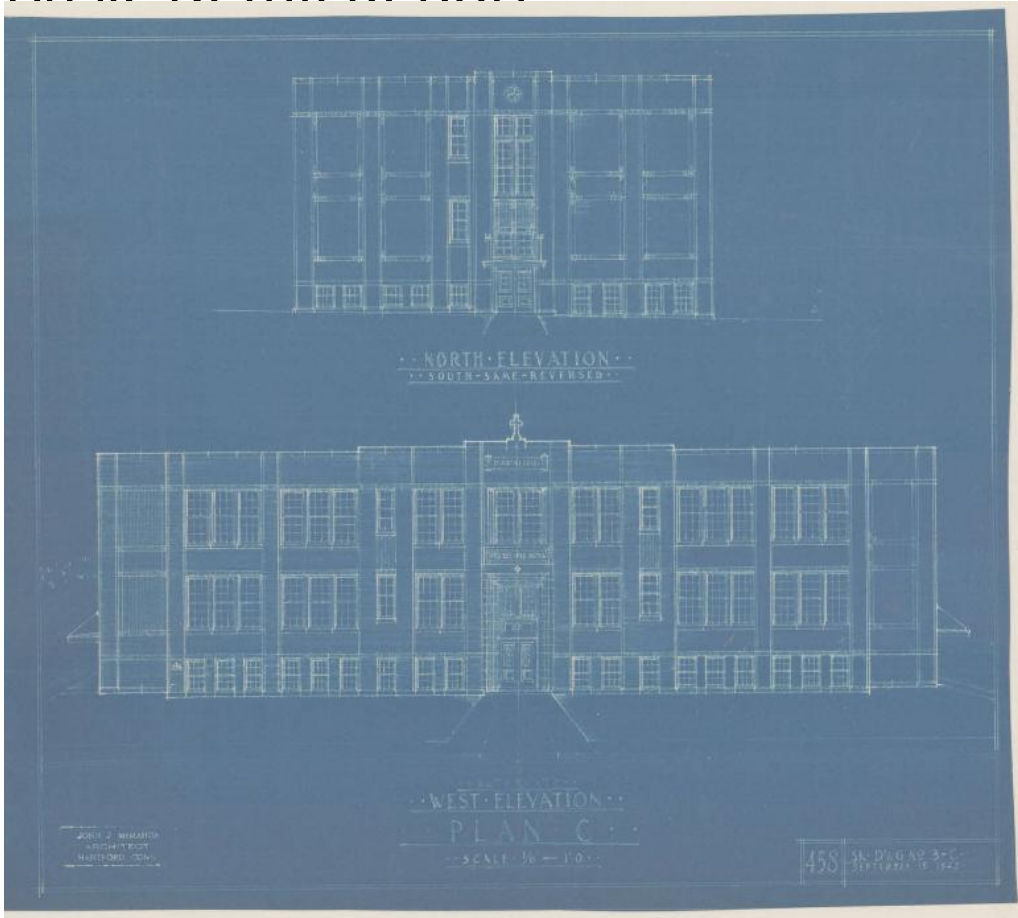


Basic Detail Report



Title St. Justin's School, Hartford

Date 1945-1946

Primary Maker John J. McMahon

Medium Blueprints, facsimile blueprints; cyanotype on paper

Description Drawings include plans for plot, first floor and elevations for north, south, and west. Plans include Canterbury Street, Blue Hills Avenue, Plainfield Street, curb line, street line, veranda, building lines, church, rectory, garage, teacher's room, library, classrooms, office, nurse's office, teacher's room. Elevations show three story building with six bays with protruding center bays. Nine over nine double hung sash windows throughout with a two door entrance under molded relief. The side elevation features panels of brick or horizontal

Basic Detail Report

siding and a cross in center of roof. Alternate elevations show first floor windows

as four over four double hung sash with flat lintels or two over two and six over

six double hung sash with a protruding two door entrance with multipaned

windows. Scale for drawings is $1/8" = 1'0"$ and $1/32" = 1'0"$.

Dimensions Sheet (height x width): 22 x 30 1/8in. (55.9 x 76.5cm)