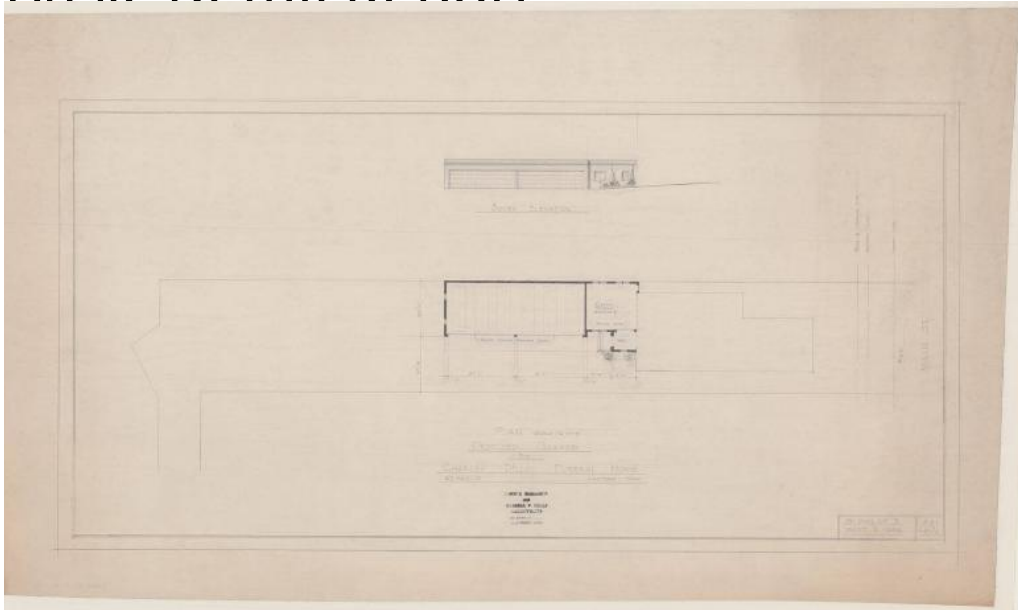


Basic Detail Report



Title Dillon Funeral Home Garage

Date 1946

Primary Maker John J. McMahon

Medium Drawings; pencil on paper or linen

Description Drawings include plans for proposed garage, proposed garage plan scheme B and elevation of south side. Plans include heating, wash and service, three port garage, casket storage and motor driven overhead doors. Elevations show two door garage and six over six double hung sash windows. Scales for drawings are $1/16" = 1'0"$ and $1/8" = 1'0"$.

Dimensions Sheet (height x width): $16 \frac{3}{4} \times 28 \frac{1}{2}$ in. (42.5 x 72.4cm)