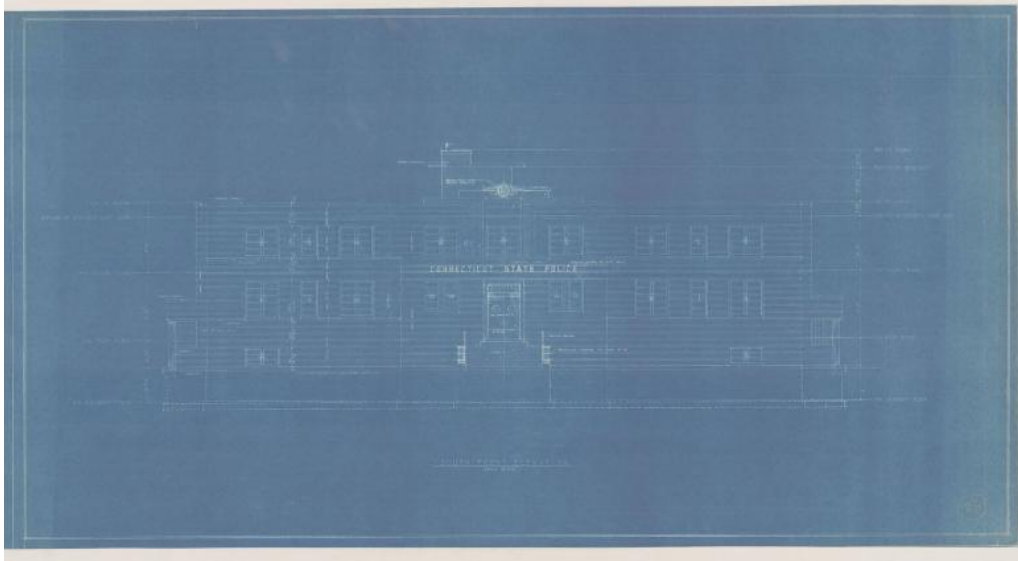


Basic Detail Report



Title State of Connecticut Police Barracks and Garage, Killingworth

Date about 1935

Primary Maker John J. McMahon

Medium Blueprints; cyanotype on paper

Description Blueprints include plan of plot, basement floor, first floor, second floor, roof, and elevations for front (south), rear (north), side (west), side (east).

Also, transverse section, sections of roof scuttle, and notes on interior finish schedule. Plans include Route 80, topography, compass, barracks, pistol range, cell room, examination room, food storage, boiler, photography and

fingerprinting, seized evidence storage, dining room, lieutenant's office, general office room, built up roofing, locker room, police woman's office, report room, granite walkway, dormitory room, captain's room and fan room. Elevations

show two story, three bay building with flat, concrete roof. The entrance features glass block transom with bronze railing. There are two over two double hung sash windows, bronze shield, limestone coping and concrete foundation.

Scale for drawings is 1'0" = 40' 0" and 1/4" = 1' 0".

Basic Detail Report

Dimensions Sheet (height x width): 22 x 42in. (55.9 x 106.7cm)